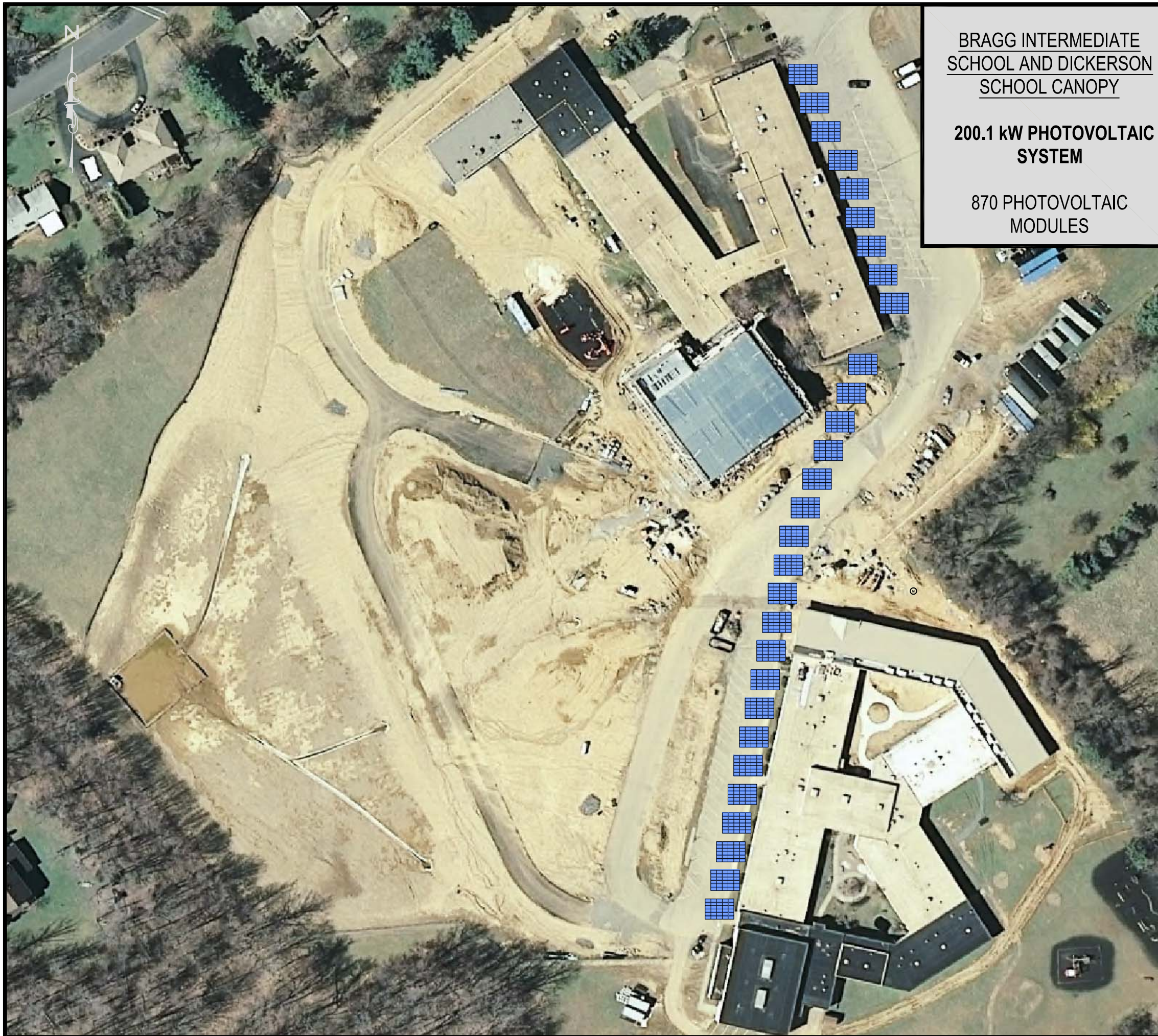


Plotted: 06/28/11 - 11:20 AM, By: jvogel
File: \\bsginc.wan\corp\Cranford\Jobs\Gabel Associates\02526100000\Dwg\Finals\revisions 041311\100000-08E-SP-8- Bragg Intermediate School rev1.dwg, ---> OP




**BRAGG INTERMEDIATE
SCHOOL AND DICKERSON
SCHOOL CANOPY**

**200.1 kW PHOTOVOLTAIC
SYSTEM**

**870 PHOTOVOLTAIC
MODULES**

LEGEND

 -PHOTOVOLTAIC MODULE ARRAY(GROUND).


 -ELECTRIC METER.



PHOTO SOURCE - © 2010 BIRDSALL SERVICES GROUP

IMAGE BY NJGIN ©

**CHESTER SCHOOL DISTRICT
BRAGG AND DICKERSON OPEN SPACE**

250 ROUTE 24

PHOTOVOLTAIC CONCEPTUAL SITE PLAN

SITUATED IN
CHESTER, NEW JERSEY



65 Jackson Drive
Cranford, NJ 07016
NJ Certificate of Authorization No. 24GA28028000

Tel.: 908.497.8900
Fax.: 908.497.9134
WWW.BIRDSALL.COM

Drawing Name: 100000-08E-SP-8- Bragg Intermediate School rev1.dwg	Drawn EMO	Designed	Checked GL	Released -
Job No. 100000	Date 4/14/2011	Scale: (H) NONE (V)	SP-8A	