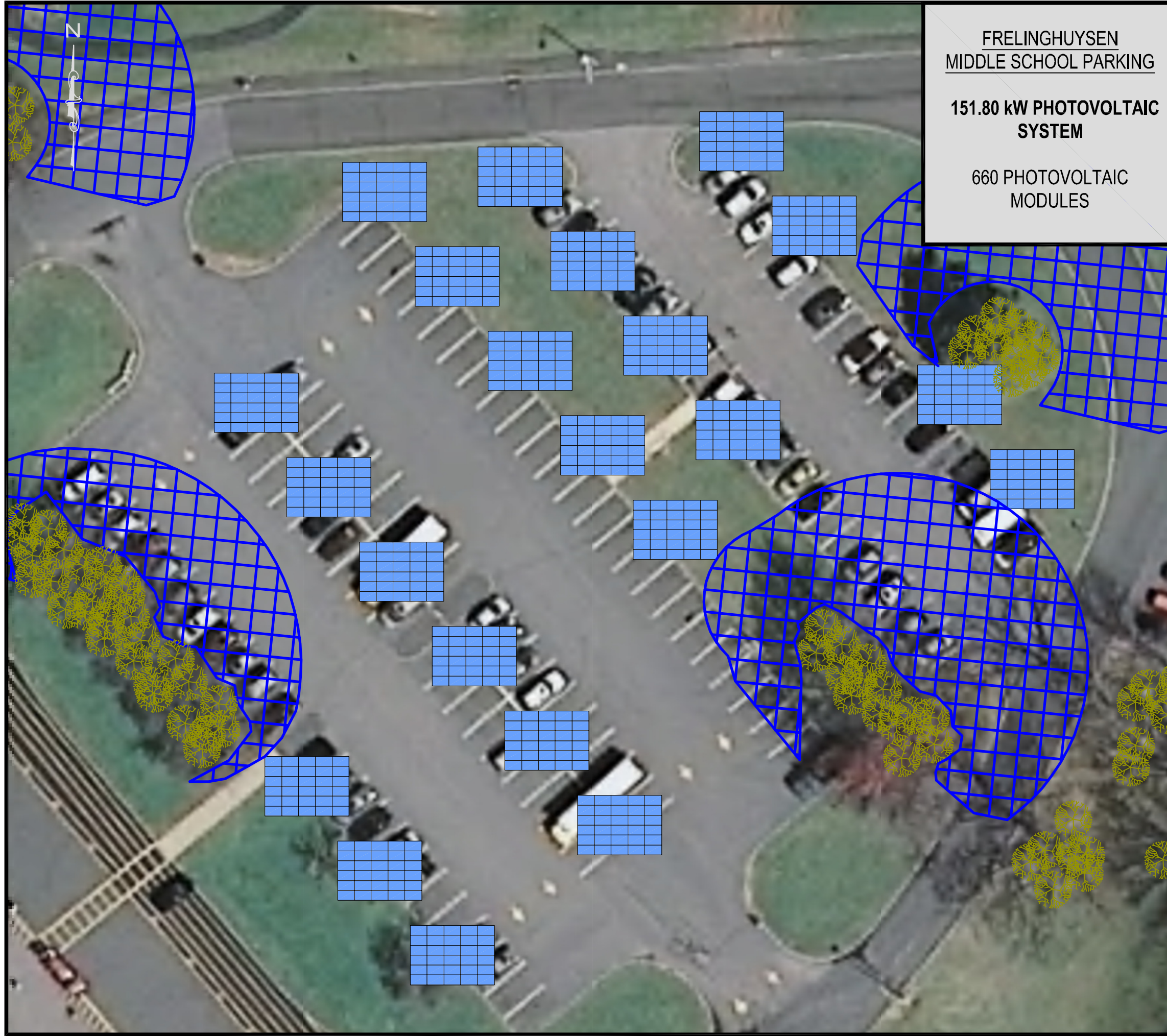


Plotted: 05/16/11 - 3:58 PM, By: pascualj
 File: M:\Cranford\Jobs\Gabel Associates\02526100000\0wg\Finals\revisions 041311\100000-08E-SP-15- Frelinghuysen-rev2.dwg, ----> PARKING

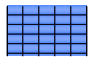


**FRELINGHUYSEN
 MIDDLE SCHOOL PARKING**

**151.80 kW PHOTOVOLTAIC
 SYSTEM**

**660 PHOTOVOLTAIC
 MODULES**

LEGEND

 -PHOTOVOLTAIC MODULE ARRAY.

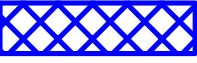
 -SHADED AREA.



PHOTO SOURCE - © 2010 BIRDSALL SERVICES GROUP

IMAGE BY NJGIN ©

**MORRIS TOWNSHIP BOE
 FRELINGHUYSEN MIDDLE SCHOOL
 200 WEST HANOVER AVENUE**

PHOTOVOLTAIC CONCEPTUAL SITE PLAN

SITUATED IN
 MORRISTOWN, NEW JERSEY

 **BIRDSALL SERVICES GROUP**
 ENGINEERS & CONSULTANTS

65 Jackson Drive
 Cranford, NJ 07016
 NJ Certificate of Authorization No. 24GA28028000

Tel.: 908.497.8900
 Fax.: 908.497.9134
 WWW.BIRDSALL.COM

Drawing Name: 100000-08E-SP-15- Frelinghuysen-rev2.dwg	Drawn JP	Designed	Checked GL	Released -
Job No. 100000	Date 05/16/2011	Scale: (H) NONE (V)	SP-15A	