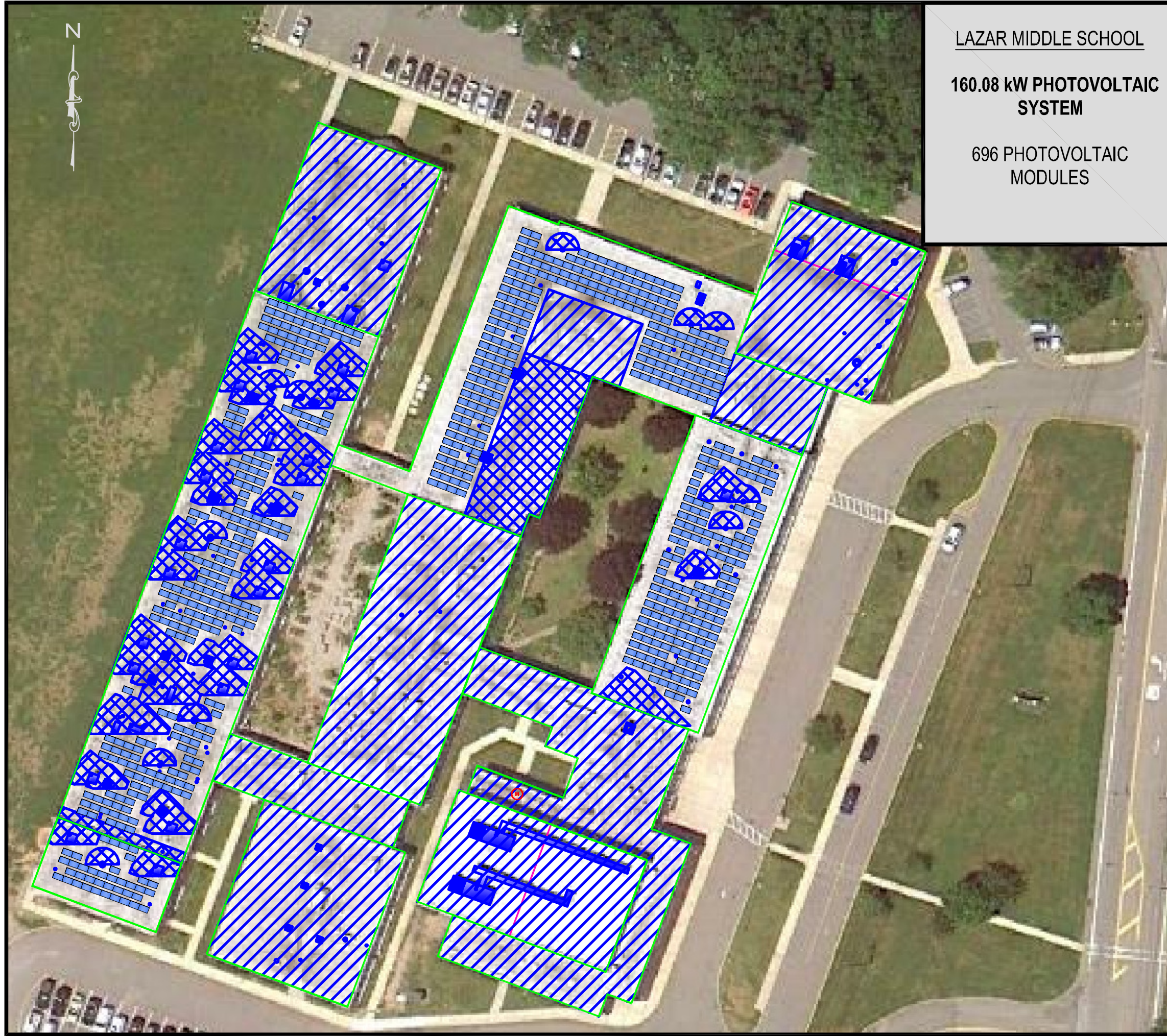


Plotted: 04/14/11 - 4:32 PM, By: oelisce
File: M:\Cranford\Jobs\Gabel Associates\02526100000\0wg\Finals\revisions 041311\100000-08E-SP-24- Lazar Middle School rev1.dwg, ---> ROOF



LAZAR MIDDLE SCHOOL
160.08 kW PHOTOVOLTAIC SYSTEM
696 PHOTOVOLTAIC MODULES

LEGEND








-  -PHOTOVOLTAIC MODULE ARRAY.
-  -ELECTRIC METER.
-  -ROOF AREA OUTLINE.
-  -EXPANSION JOINT.
-  -ROOF OBSTRUCTIONS.
-  -UNUSED ROOF AREA.
-  -SHADED AREA.



PHOTO SOURCE - © 2010 BIRDSALL SERVICES GROUP

IMAGE BY GOOGLE EARTH ©

MONTVILLE TOWNSHIP BOE
LAZAR MIDDLE SCHOOL
123 CHANGEBRIDGE ROAD

PHOTOVOLTAIC CONCEPTUAL SITE PLAN

SITUATED IN
MONTVILLE, NEW JERSEY



65 Jackson Drive
Cranford, NJ 07016
NJ Certificate of Authorization No. 24GA28028000
Tel.: 908.497.8900
Fax.: 908.497.9134
WWW.BIRDSALL.COM

Drawing Name: 100000-08E-SP-24- Lazar Middle School rev1.dwg	Drawn EMO	Designed	Checked GL	Released -
Job No. 100000	Date 2/1/2011	Scale: (H) NONE (V)	SP-24	