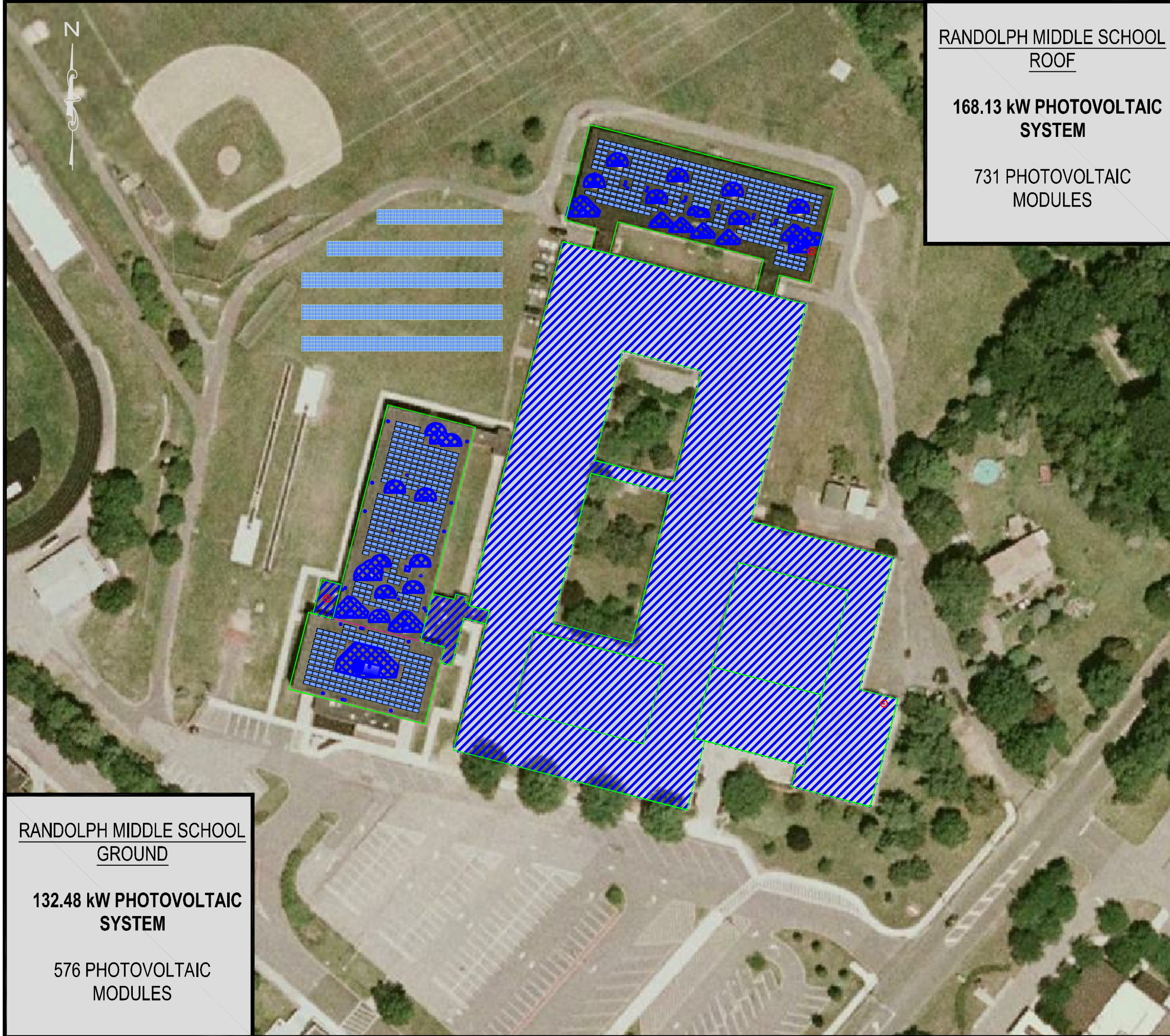


Plotted: 04/15/11 - 2:54 PM, By: oelisce
 File: M:\Cranford\Jobs\Gabel\Associates\02526100000\0wg\Finals\revisions 041311\100000-08E-SP-21-Randolph Middle School rev1.dwg, ---> ROOF



RANDOLPH MIDDLE SCHOOL
ROOF
168.13 kW PHOTOVOLTAIC
SYSTEM
731 PHOTOVOLTAIC
MODULES

RANDOLPH MIDDLE SCHOOL
GROUND
132.48 kW PHOTOVOLTAIC
SYSTEM
576 PHOTOVOLTAIC
MODULES

LEGEND


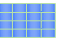





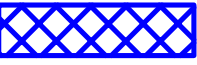
-  -PHOTOVOLTAIC MODULE ARRAY(ROOF).
-  -PHOTOVOLTAIC MODULE ARRAY(GROUND).
-  -ELECTRIC METER.
-  -EXPANSION JOINT.
-  -ROOF AREA OUTLINE.
-  -ROOF OBSTRUCTIONS.
-  -UNUSED ROOF AREA.
-  -SHADED AREA.



PHOTO SOURCE - © 2010 BIRDSALL SERVICES GROUP

IMAGE BY GOOGLE EARTH ©

RANDOLPH BOE
RANDOLPH MIDDLE SCHOOL
507 MILLBROOK AVENUE

PHOTOVOLTAIC CONCEPTUAL SITE PLAN

SITUATED IN
 RANDOLPH, NEW JERSEY


BIRDSALL SERVICES GROUP
 ENGINEERS & CONSULTANTS

65 Jackson Drive
 Cranford, NJ 07016
 NJ Certificate of Authorization No. 24GA28028000

Tel.: 908.497.8900
 Fax.: 908.497.9134
 WWW.BIRDSALL.COM

| | | | | |
|---|-------------------|------------------------|---------------|---------------|
| Drawing Name: 100000-08E-SP-21-Randolph Middle School rev1.dwg | Drawn EMO | Designed | Checked GL | Released - |
| Job No. 100000 | Date 2/17/2011 | Scale: (H) NONE (V) | SP-21 | |