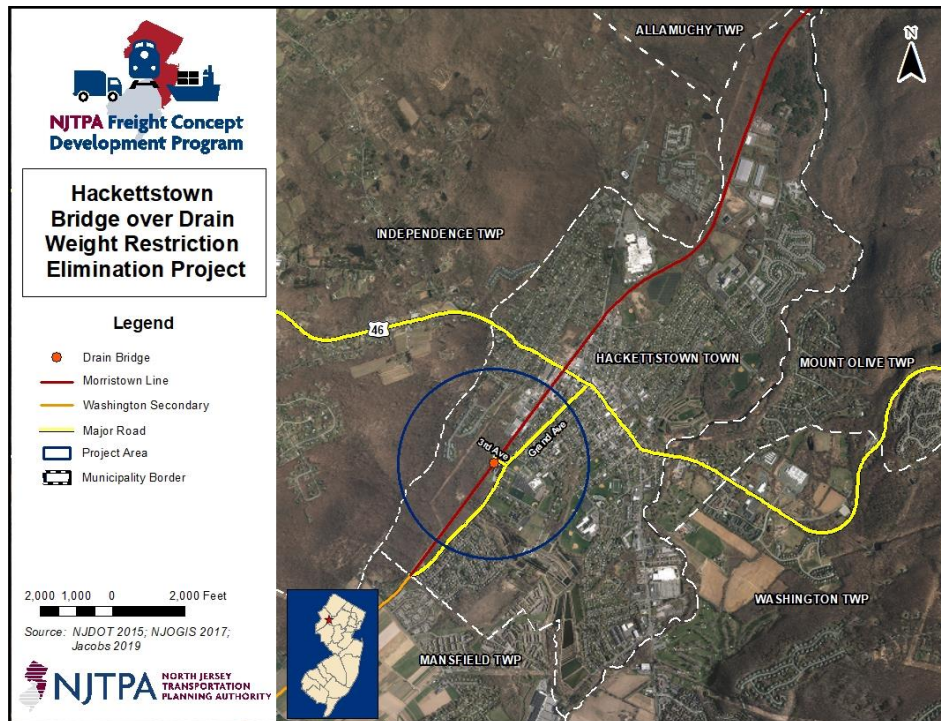


NJTPA Pilot Freight Concept Development Program

Hackettstown Bridge over Drain Weight Restriction Elimination Project



Project Purpose and Need

The purpose of this project is to provide freight transportation infrastructure that meets current industry standards in order to promote economic development and optimize freight movement particularly the ability to accommodate the movement of 286,000 pound (286K) railcars over the Washington Secondary/Morristown Line in Hackettstown, New Jersey.

The Project

Develop and evaluate potential alternatives to improve the carrying capacity of the bridge and identify the preferred alternative to be advanced into design and implementation.

Background

The Washington Secondary/Morristown Line Corridor extends from Phillipsburg to Morristown and provides rail freight access to businesses in Warren and Morris Counties. The bridge over the drain is structurally deficient and limits the weight of rail cars that can be carried across it. Currently, loading of rail cars moved along the corridor is limited to 263,000 pounds (263K). Since 1995, the Association of American Railroads has maintained a national standard allowing loading of up to 286K per rail car. Improvements to the bridge to allow the movement of 286K rail cars would allow more cost-effective transport of materials to and from the rail-dependent businesses, supporting the growth of these businesses and the jobs and economic value they offer to the local and state economy.

Further Information

Jakub Rowinski, Project Manager, NJTPA

Phone: (973) 639-8443

Email: jrowinski@njtpa.org

Schedule

- This effort began in April 2019
- Purpose & Need Statement Complete, June 2019
- Selection of Preliminary Preferred Alternative, December 2019
- Concept Development Report Complete, June 2020