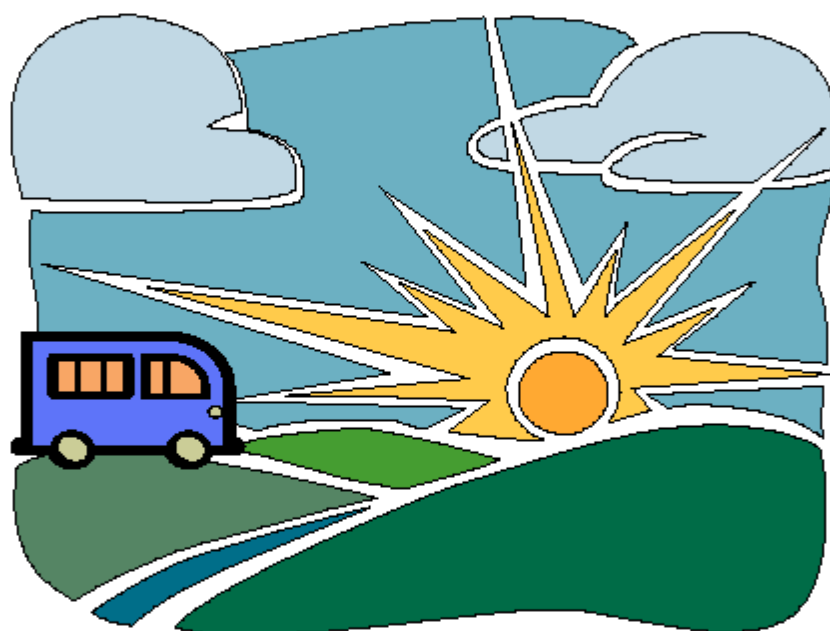


# MORRIS COUNTY TRANSPORTATION



*A GUIDE TO TRANSPORTATION SERVICES  
THROUGHOUT MORRIS COUNTY*

# INTRODUCTION

This guide to transportation options has been compiled by the Morris County Office of Aging, Disabilities and Community Programming and can be reached by calling Morris County Aging & Disability Resource Connection 1 (800) 564-4656. In keeping with the tradition of “reaching out” to the disabled and senior community, we have developed this booklet as a tool to help you gain better access to the services available. By combining county, municipal and private not-for-profit sponsored transportation services in one directory, we hope that it will serve as a comprehensive guide.

Many of the services listed in this directory require that appointments be scheduled ahead of time. Please call the service provider to determine how much advance notice is needed.

The Morris County Department of Human Services cannot warrant or guarantee the quality of service provided by any transportation provider.

We hope that this directory makes your travels through Morris County easier.

*Revised 2022*



***Call your town to schedule a pickup:***

**Boonton**

**Boonton Senior Transport**

**(973) 402-9410 X 631**

**Seniors 55+ years (Boonton residents only)**

**Office Hours: Monday – Friday, 8:30 a.m. – 4:00 p.m.**

**Vehicle Operation: Monday – Friday, 9:00 a.m. – 2:30 p.m. (6 mile radius)**

**Reservations required 24 hours in advance or more**

**Curb-to-curb service**

**Not handicapped accessible**

**Passengers must be able to board and disembark without assistance.**

**Boonton Township**

**See Montville**

**Budd Lake**

**See Mount Olive Township**

**Butler Borough**

**Five Town Regional Dial-A-Ride, Inc.**

**(973) 835-8885**

**(Includes Kinnelon, Lincoln Park, Township of Pequannock and Riverdale)**

**Seniors 55+ years; Veterans; and Disabled 18 years + w/ Lift**

**Office Hours: Monday – Friday, 8:30 a.m. – 4:30 p.m.**

**Vehicle Operation: Monday – Friday, 8:30 a.m. – 4:30 p.m.**

**Reservations required 72 hours in advance or more**

**Handicapped Accessible**

**Curb-to-Curb Service**

**Will not transport inpatient released from hospital**

**Will travel out of town approximately 30 minutes**

**Chester Township**

**Senior Bus Service**

**908-879-5100 X 390**

**Office Hours: Monday – Thursday, 9:00 am – 3:00 pm (leave message)**

**Vehicle Operation: Monday – Thursday, 9:00 am – 2:00 pm**

**Vehicle is not handicapped accessible**

## **Denville Township**

### **Denville Dial A Ride**

**(973) 625-7799**

**Seniors 55+, Disabled 18+ and Veterans**

**Office Hours: Monday - Friday 7:30 a.m. - 3:30 p.m.**

**Vehicle Operation: Monday - Friday 7:30 a.m. - 3:00 p.m.**

**Reservations required 72 hours in advance**

**Medical appointments (8-mile radius from Denville Municipal Building)**

## **Dover**

### **Dover Dial A Ride**

**(973) 366-2200 X 1131**

**Seniors & Disabled 55+ years**

**Office Hours: Monday – Friday, 8:00 a.m. – 2:30 p.m.**

**Vehicle Operation: Monday – Friday, 9:00 a.m. – 3:00 p.m.**

**Reservations required 48 hours in advance**

**Handicapped Accessible**

**Transportation provided within a 1 mile radius for medical, food shopping, & social services**

**Dover Residents only**

**Service not available for Victory Gardens or Wharton**

## **East Hanover**

### **East Hanover Senior Dial A Ride**

**(973) 428-3029**

**Both Seniors & Disabled MUST be 60+ years**

**Call In Time: Monday – Friday, 7:00 a.m. – 3:00 p.m.**

**Vehicle Operation: Monday – Friday, 7:30 a.m. – 3:30 p.m.**

**Reservations required**

**Handicapped Accessible**

**Door-to-Door Service Available**

**East Hanover residents only**

## **Florham Park**

**No services available**

**See other transportation services**

## **Hanover Township**

**Dial a Ride w/ Lift**

**(973) 428-2498**

**(Includes Whippany and Cedar Knolls)**

**Seniors & Disabled**

**Office Hours: Monday – Friday, 9:00 a.m – 12:00 p.m.**

**Vehicle Operation: Monday - Thursday, 9:00-4:00PM and Friday, 8:00-1:00PM**

**Call in time: Between 9:00 a.m. – 12:00 p.m.**

**Reservations required 48 hours in advance**

**Handicapped Accessible**

**Door-to-Door Service Available**

**#1 Priority – Medical Appointments**

**#2 Priority – Food Shopping**

## **Harding Township**

**No services available**

**See other transportation services**

## **Jefferson Township**

**Dial A Ride**

**(973) 208-6123**

**Seniors & Disabled w/ Lift**

**Office Hours: Monday – Friday, 8:00 a.m. – 3:30 p.m.**

**Vehicle Operation: Monday – Friday, 9:30 a.m. – 2:00 p.m.**

**Reservations required: 48 hours in advance for medical appointments & 24 hours in advance for shopping**

**Handicapped Accessible**

## **Kinnelon**

**See Butler**

## **Lincoln Park**

**See Butler**

## **Long Hill**

**Dial A Ride**

**(908) 647-8000 x 235**

**Residents 55+ years without other transportation means, or limited driving capability**

**Office Hours: Monday – Friday, 10:00 a.m. – 12:00 p.m.**

**Vehicle Operation: Tuesday/Wednesday/Thursday 9:00 a.m. – 12:00 p.m., or later if necessary**

**Reservations required 48 hours in advance**

**Handicapped Accessible**

**Door-to-Door Service Available**

## **Madison**

**Dial A Ride Senior Services**

**(973) 593-3095**

**60+ years w/ Lift (wheelchair passengers must have aide or companion)**

**Call In Time: Monday – Friday, 8:30 a.m. – 9:00 a.m. for same day service within Madison**

**Hours of Vehicle Operation: Monday – Friday, 9:00 a.m. – 2:15 p.m.**

**Handicapped Accessible**

**Door-to-Door service available for food shopping, senior center, hair appointments, YMCA, other appointments within borough boundaries**

**Passengers must be able to board and disembark from van without assistance**

## **Mendham Borough & Mendham Township**

**Mendham Area Senior Transportation (MAST)**

**(973) 543-2666**

**<http://mashnj.org/transportation.html>**

**Seniors & disabled 18+ years**

**Vehicle Operation: Monday & Tuesday, 9:00-3:00 and Wednesday - Friday, 9:00-12:30PM**

***Not* Handicapped Accessible**

**Passengers must be able to board and disembark without assistance**

**Curb-to-curb service**

## **Mine Hill**

**Mine Hill Van**

**(973) 270-5804**

**Seniors & disabled**

**Vehicle Hours: Tuesday: 9:30 a.m. – 1:30 p.m.**

**Office Hours: Monday – Friday, 9:00 a.m. – 4:30 p.m.**

**Reservations required 48 hours in advance. *Not* Handicapped Accessible**

**Passengers must be able to board and disembark without assistance.**

**Door-to-Door Service Available**

## **Montville**

**Montville Township Dial A Ride**

**(973) 331-3336**

**55+ years (no disabled; call if you have questions about transport)**

**Vehicle Operation: Monday – Friday, 9:30 a.m. – 3:00 p.m.**

**Office Hours: Monday – Friday, 9:00 a.m. – 12:00 p.m.**

**Advance reservation required 24 hours in advance**

**Handicapped Accessible**

**Must reside in either Montville or Boonton Township**

**All participants must be ambulatory unless have own wheelchair and escort**

**Curb-to-curb Service Available**

## **Morris Plains**

**Dial A Ride**

**(973) 267-1116**

**60+ years only**

**Office Hours: Monday – Thursday, 8:30 a.m. – 1:00 p.m.**

**Reservations required 48 hours in advance**

**Not Handicapped Accessible – Transports only within 5 mile radius**

## **Morris Township & Morristown**

**Colonial Coach**

**(973) 267-2733**

**Office Hours: Monday – Saturday, 9:00 a.m. – 4:00 p.m.**

**Vehicle Operation: Monday – Saturday, 9:00 a.m. – 4:00 p.m.**

**No Reservations required**

**Not Handicapped Accessible**

**Two routes; call to see which bus route is operating**

## **Mt. Arlington**

**Dial A Ride**

**(973) 398-2413**

**Seniors & Disabled**

**Office Hours: Monday Friday 7:30 a.m. – 3:30 p.m.**

**Vehicle Operation: Monday – Friday, 8:00 a.m. – 3:30 p.m.**

**Reservations required 48 hours in advance**

**Leave message – will get a call back for medical appointments, nutrition site, and food shopping**

**#1 Priority: Medical Appointments**

## **Mt. Olive**

**Mt. Olive Senior Transit**

**(973) 691-0900 X 7365**

**(Includes Budd Lake and Flanders Areas)**

**Resident Seniors 55+ years and disabled**

**Office Hours: Monday – Friday, 8:30 a.m. – 4:30 p.m.**

**Vehicle Operation: Monday – Friday, 9:00 a.m. – 3:00 p.m.**

**Handicapped Accessible**

**Call at least 7 days in advance for medical appointments**

**Transports to Hackettstown, Dover, Roxbury, Chester and Randolph**

## **Mountain Lakes**

**No services available**

**See other transportation services**



## **Netcong**

### **Netcong Dial A Ride**

**(973) 347-0252 X 116 (Leave Message)**

**Seniors & Disabled**

**Office Hours: Monday – Friday, 9:00 a.m. – 4:00 p.m.**

**Vehicle Operation: Monday – Friday, 8:00 a.m. – 1:00 p.m.**

**Reservations required – prefer 48 hours in advance and on a first come, first serve basis**

**Handicapped Accessible**

**Transports only within a 15 mile radius**

## **Parsippany-Troy Hills**

### **Parsippany Medical Driver**

**(973) 263-7160**

**Seniors & Disabled**

**Office Hours: Monday – Friday, 9:00 a.m. – 5:00 p.m.**

**Vehicle Operation: Monday – Friday, 9:00 a.m. – 2:30 p.m.**

**Reservations required at least 7 days in advance**

**Curb-to-Curb pick up and drop off: passenger must be able to board vehicle on their own**

**Parsippany Residents Only – Passenger must be ambulatory**

### **Parsippany Office on Aging**

**(973) 263-7351**

**Seniors & Disabled – 2 Cars Available**

**Office Hours: Monday – Friday, 9:00 a.m. – 5:00 p.m.**

**Vehicle Operation: Monday – Friday, 10:00 a.m. – 2:30 p.m.**

**Reservations required at least 7 days in advance**

**Curb-to-Curb pick-up and drop-off: passenger must be able to board vehicle on their own**

**Passenger must be ambulatory.**

### **Parsippany-Troy Hills Free Transit System**

**(973) 263-7093**

**Free transit system for residents**

**Bus Operation: Monday – Friday, 9:00 a.m. – 4:00 p.m.**

**Limited service available Saturday morning**

**Two buses run on the hour starting at the Morris Hills Shopping Center**

**No service between 12:00 p.m. – 1:00 p.m. or on holidays**

## **Pequannock**

**See Butler**

## **Randolph**

**Randolph Dial A Ride**

**(973) 989-7084**

**Seniors 60+ years & Disabled w/ Lift**

**Office Hours: Monday – Friday, 8:30 a.m. – 4:30 p.m.**

**Vehicle Operation: Monday – Thursday, 9:00 a.m. – 3:00 p.m.**

**Reservations required 24 hours in advance for shopping & nutrition**

**1 week notice for medical appointments (call as soon as appointment is scheduled)**

***Not* Handicapped Accessible**

**Passengers must be able to board and disembark without assistance**

**Medical appointments must be in Morris County**

**Randolph Residents only**

## **Riverdale**

**See Butler**

## **Rockaway Borough**

**Seniors & Disabled**

**(973) 627-2000**

**Office Hours: Monday – Friday 8:30 a.m. – 4:30 p.m.**

**Vehicle Operation: Tuesday and Thursday, 9:30 a.m. - 11:30 a.m.**

**Tuesday: Rockaway Mall**

**Wednesday and Friday: ShopRite, Pathmark, Acme**

**No medical appointments**

**Reservations required at least 1 day in advance**

**Handicapped Accessible**

## **Rockaway Township**

**Rockaway Twp. Dial A Ride Office**

**(973) 983-2839 – leave message for reservations**

**Senior 55 + years and Disabled 21+ years**

**Office Hours: Monday – Friday, 9:00 a.m. – 5:00 p.m.**

**Vehicle Operation: Monday – Friday, 8:00 a.m. – 1:30 p.m.**

**Reservations required 1 week in advance**

**Handicapped Accessible**

**Transportation is provided for any type of doctor services, health related issues, and nutrition**

**Rockaway Township Residents only**

## **Roxbury Township**

### **Dial A Ride**

**(973) 448-2058**

### **Seniors & Disabled**

**Office Hours: Monday – Friday, 8:00 a.m. – 3:00 p.m.**

**Vehicle Operation: Monday – Friday, 7:00 a.m. – 2:30 p.m.**

**Reservations required 24 hours in advance, but no more than 5 working days in advance**

**Handicapped Accessible**

**Door-to-Door Service Available**

## **Victory Gardens**

**No municipal services available**

**See other transportation services**

## **Washington Township**

### **Senior Transportation**

**Residents age 55+**

**908-876-8623**

**Office Hours: Anytime, leave message**

**Vehicle Operation: Monday – Friday, 9:30 am – 1:30 pm**

**Reservations required two weeks in advance**

**Handicapped accessible w/ lift.**

## **Wharton**

### **Senior Citizens Transport**

**(973) 659-9111 – Leave message on answering machine**

**Office Hours: 8:30 a.m. – 4:30 p.m.**

**Vehicle Operation: Monday - Friday, 9:00-2:00PM**

**Handicapped accessible van**

**Must make reservation 48 hours in advance**

**Need I.D. card to ride bus. Call Borough Hall for general information: (973) 361-8444**

# Morris Area Paratransit System (MAPS)

MAPS is a curb-to-curb shared ride transportation service available to Morris County residents. This service is for senior citizens, people with disabilities, and veterans. We also provide transportation to the general public who live in rural areas of the county.

Use MAPS for medical transportation, social services, and grocery shopping!

## Contact Us

### Phone

[\(973\) 829-9103](tel:(973)829-9103)

### Email

[maps@co.morris.nj.us](mailto:maps@co.morris.nj.us)

## Morris County Shuttle Service

We offer a **free** shuttle for our residents to get to various county offices:

- Downtown Morristown -- Admin & Records Building and Schuyler Annex (30 Schuyler Place)
- Office of Temporary Assistance (OTA) (340 W. Hanover Ave)
- Behavioral Health and Workforce Development (1 Medical Drive)

The shuttle runs Monday through Friday (excluding holidays).

Arrive at the below locations on schedule to pick up the shuttle. No pre-registration is necessary.

<b>Monday - Friday Schedule</b>			
<b>Time</b>	<b>Pick-Up</b>	<b>Stop 1</b>	<b>Stop 2</b>
10:30AM	30 Schuyler Place, Morristown	340 W. Hanover Ave (OTA)	1 Medical Drive, Morris Plains
1:15PM	340 W. Hanover Ave (OTA)	1 Medical Drive, Morris Plains	30 Schuyler Place, Morristown
1:35PM	30 Schuyler Place, Morristown	340 W. Hanover Ave (OTA)	1 Medical Drive, Morris Plains
4:30PM	340 W. Hanover Ave (OTA)	1 Medical Drive, Morris Plains	30 Schuyler Place, Morristown



# OTHER TRANSPORTATION SERVICES

**ATLANTIC PRIVATE CARE: (973) 540-9000**

**COACH USA: COMMUNITY COACH (800) 877-1888**

Community Coach, a member of Coach USA, provides service from Morris and Essex Counties to the New York City Port of Authority Bus Terminal.

[www.coachusa.com/community](http://www.coachusa.com/community)

**LAKELAND BUS LINES, INC. (973) 366-0600**

Local service between Morris and Sussex Counties as well as service to New York City including the Port Authority Bus Terminal, Midtown Manhattan and Lower Manhattan.

[www.lakelandbus.com](http://www.lakelandbus.com)

**MORRIS COUNTY OFFICE OF TEMPORARY ASSISTANCE (866) 527-9933/9934**

Medical Appointment Transportation - **Logisticare of New Jersey**

Office Hours: Monday - Friday 8:00 a.m. - 4:00 p.m.

Vehicle Operation: Monday - Friday 8:30 a.m. - 4:30 p.m.

Reservations required 2 days in advance

Must have name and address of Doctor

**Must have valid Medicaid Number**

**MORRIS COUNTY ORGANIZATION FOR HISPANIC AFFAIRS**

Seniors, Veterans and Low Income in Morris County **(973) 366-4770 X 10 or 18**

Office Hours: Monday - Friday 9:00 a.m. - 11:00 a.m.

Vehicle Operation: Monday - Friday 7:30 a.m. - 3:30 p.m.

Reservations required 48 hours in advance

Not Handicapped Accessible

No Emergency Services

Curb-to-Curb Service

**NJ TRANSIT (973) 275-5555 TTY (800) 772-2287**

NJT is a statewide public transportation system serving the state of New Jersey and Orange and Rockland counties in New York. It operates bus, light rail, and commuter rail services throughout the state, notably connecting to major commercial and employment centers both within the state and in the adjacent cities of New York and Philadelphia.

[www.njtransit.com](http://www.njtransit.com)

**NJ TRANSIT / ACCESS LINK (800) 955-2321 TTY: (800) 955-6765**

Access Link is a paratransit service for people with disabilities who are unable to use the local fixed route NJ Transit bus services and live within  $\frac{3}{4}$  mile of an eligible bus route. Access Link service is only available during the same days and hours as the regularly scheduled local fixed route bus service, including weekends and holidays. In order to use Access Link, you must first call for eligibility and reservations.

[www.njtransit.com](http://www.njtransit.com)

**NJ TRANSIT / MORRIS COUNTY METRO (MCM) (973) 275-5555 TTY (800) 772-2287**

MCM provides service within Morris County and between Morris, Essex, Passaic, and Sussex Counties as well as service to New York City, five or six days a week.

[www.morrisdot.org](http://www.morrisdot.org)

2022



*A Publication of the Morris County Board of Commissioners*