

Morris County Courthouse

November 21, 2022

Roger Lichtman, Lisa Tsang, Francis Cooke

Agenda

Introduction

01. Project History

02. Space Program Review

03. Concepts

- 2020 4 Courtrooms per Floor
- 2022 Concept
 - Proposed Site Plan
 - Proposed Typical Court Floor Plan
 - Proposed Building Section and Stacking Diagram
 - Proposed Building Section and Stacking Diagram
 - Massing

04. Proposed Schedule

Project History

2018
Morris County Courts and County
Administration Space Need Assessment
by Dewberry Louis Berger

- Scoping for the New Courthouse Annex
 - +/- 144,000 sf
 - Additional two below grade parking garage

2020
Design of Morris County
Courthouse Expansion
by AECOM

- Survey of existing conditions (this information and work is valid)
- Program and schematics developed
 - +/-140,000 sf
 - Total of Secured Parking Spots- 12
 - Additional two below grade parking garage

Pandemic Pause

2022
Design of Morris County
Courthouse Expansion
by AECOM

- 7/6/2022 Meeting with the new AECOM team and Courthouse Design Committee
- Program validation meetings with Judiciary, Sheriff, and Engineering/Building & Grounds
 - +/-116,000 sf
 - Total of Secured Parking Spots 15
- Develop and evaluate alternatives that meet program goals
 - Public Entrance
 - Cost Reduction
 - Optimization

Space Program Review

Project Goals: Security, Safety, Efficiency and Accessibility

Program Refinements Principles :

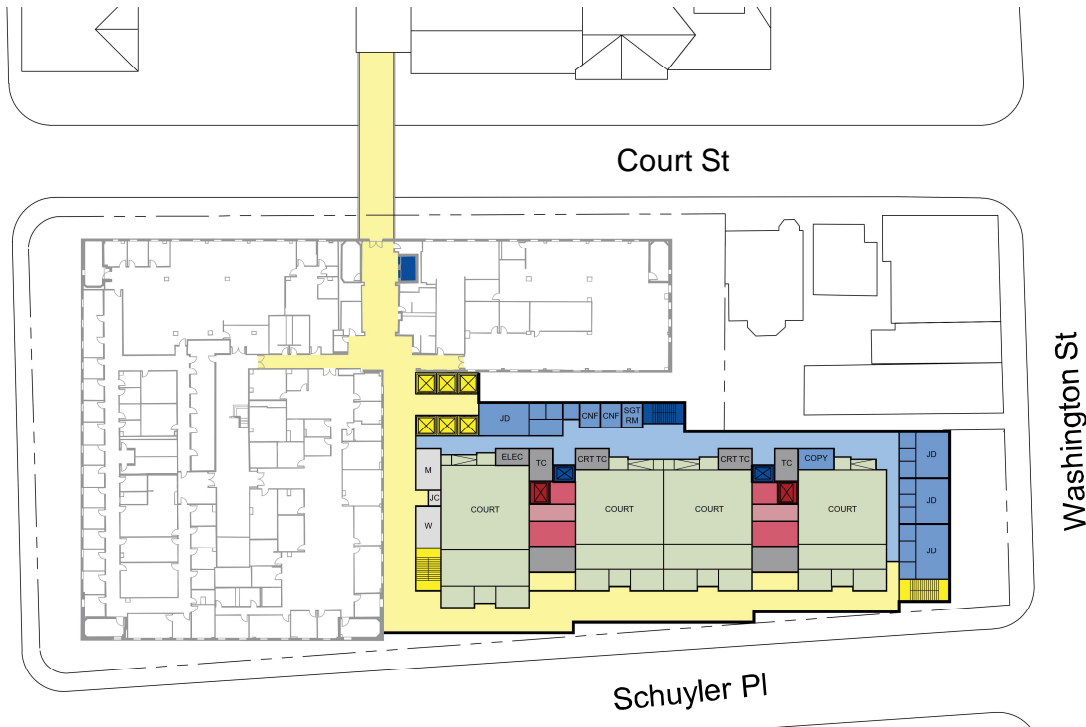
- Understanding Post Pandemic Operations
- Balance Staff / Public Wellness and Support
- Technology Awareness
- Cost Reduction Optimization
- Public Space and Community Connections

Space Program Review

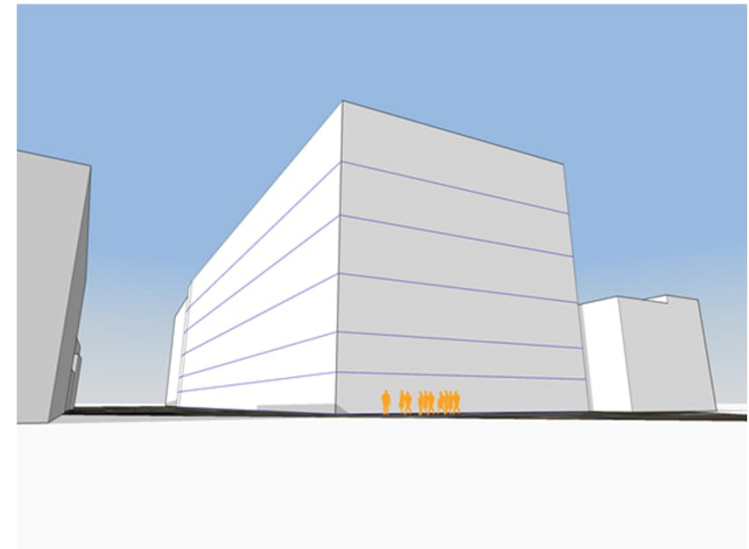
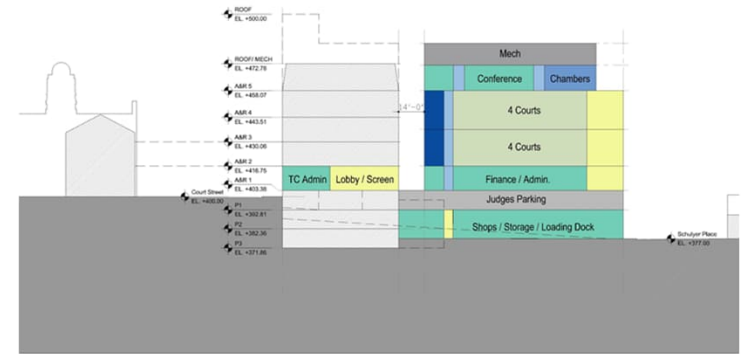
2020 and 2022 Program Comparison:

- Reduction of 23,000 GSF
- Added 200 people Jury Assembly Room
- Reduction of Holding Capacity
- Non-Relocation of Departments
 - Planning and Public Works
 - Finance Division
 - Courts Information Technology
 - Employee Resources
- 15 Secured Parking
- **Total Gross SF of New Courthouse 116,998 GSF**

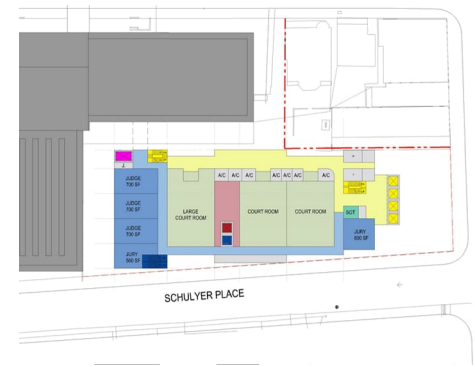
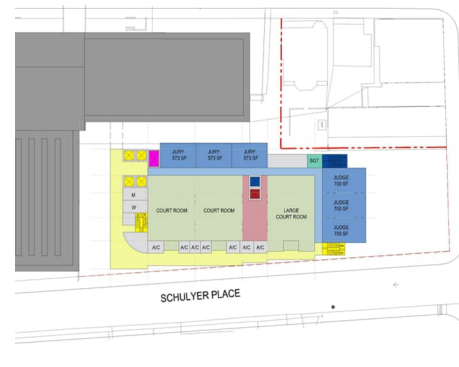
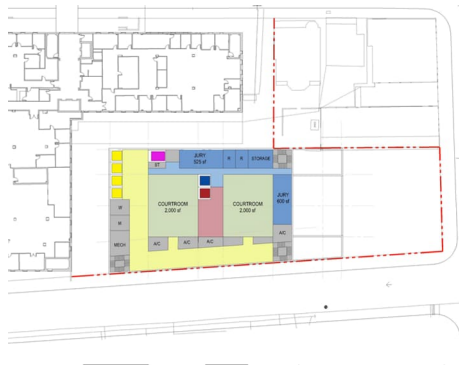
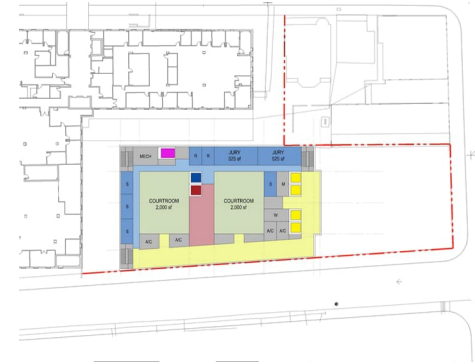
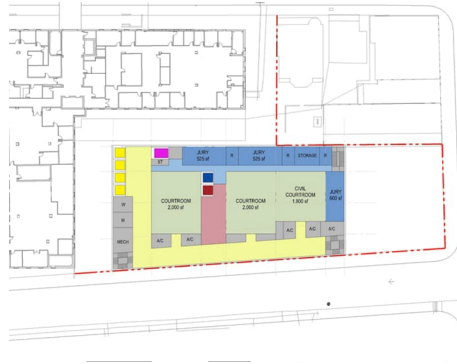
2020 - 4 Courtrooms Per Floor



2020 Schematic
4 Courtrooms, 4 Jury Deliberation Rooms, Robing Rooms
 Collegial judge's chamber on top floor



2022 Sample from Studies



2022 Proposed Site Plan



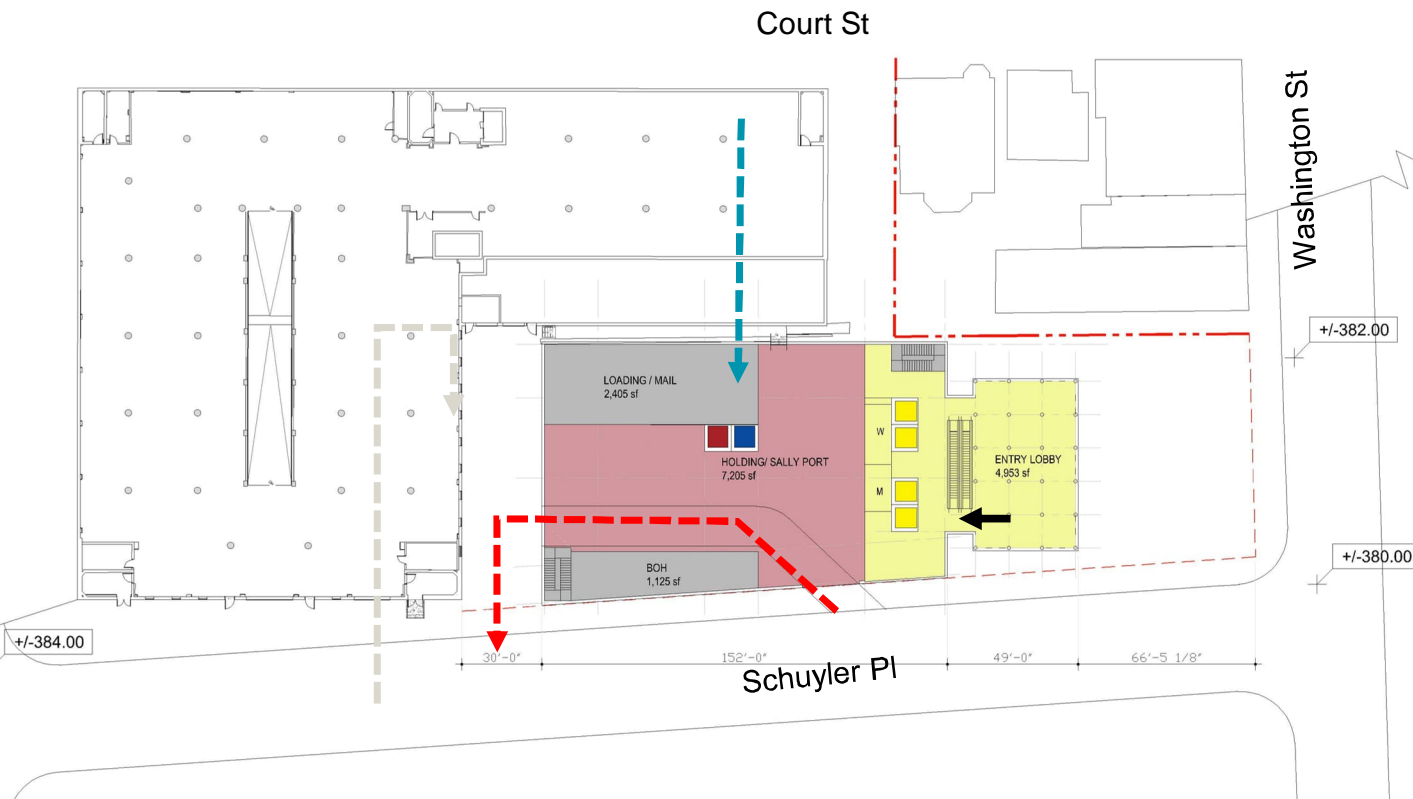
Site Circulation and Massing

- Grand entry plaza
- Holding pull through
- Judges enter from Diedre's Alley
- Deliveries through A&R dock
- Double height entry "pavilion" faces Washington Street
- Annex comfortably offset from Grand Cafe

Legend

- ← Public and Staff Entrance
- ← Judges/ Secured Parking
- ← Drive Through Sallyport
- ← Service

2022 Proposed Ground Plan



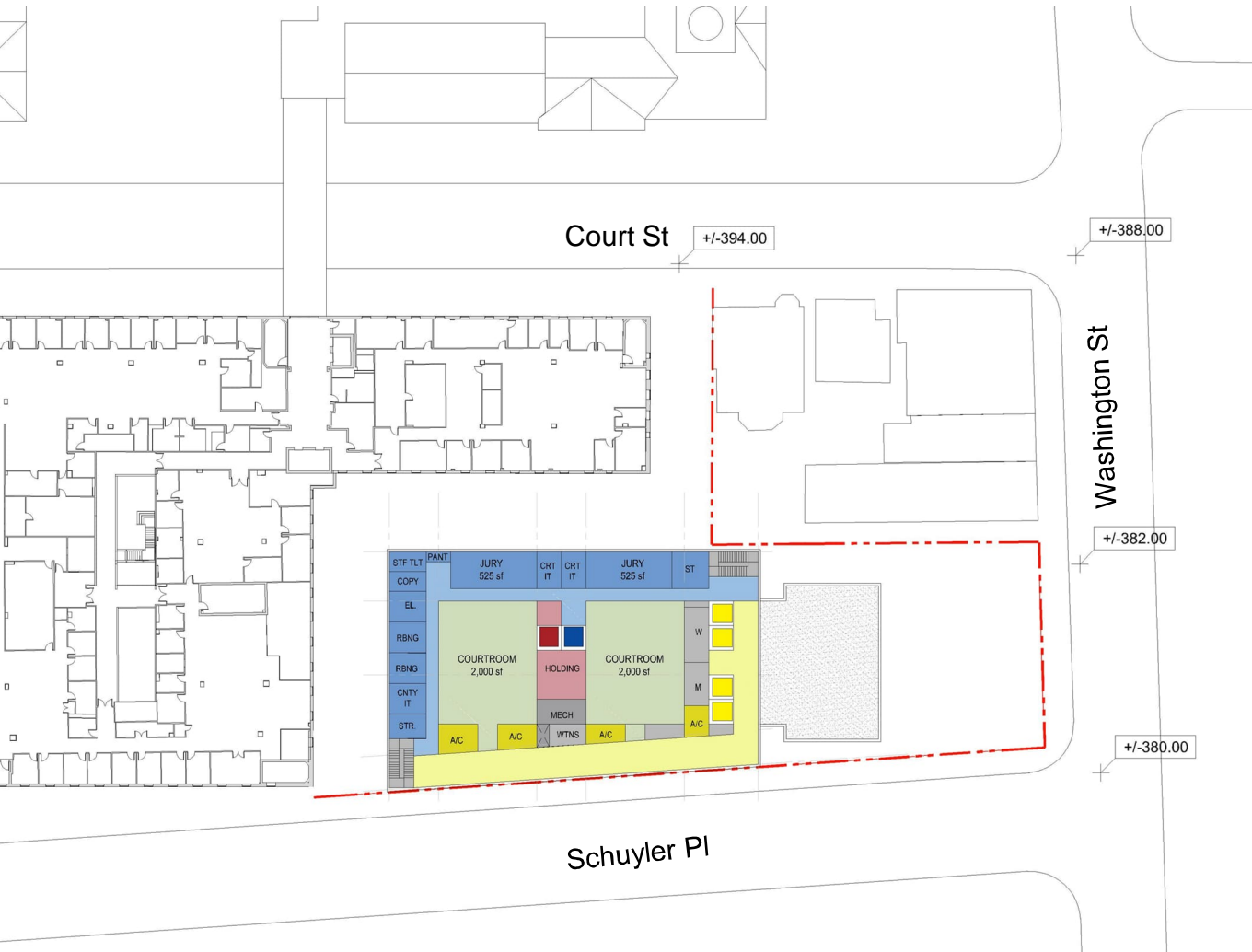
Ground Floor Plan

- Entry lobby connects to main building with escalator system and public lifts
- Holding pull through
- Judges enter from Diedre's Alley at level above
- Deliveries through A&R dock, goods and garbage use PIC lift

Legend

- ← Public and Staff Entrance
- ← Judges/ Secured Parking
- ← Drive Through Sallyport
- ← Service

2022 Proposed Typical Court Plan



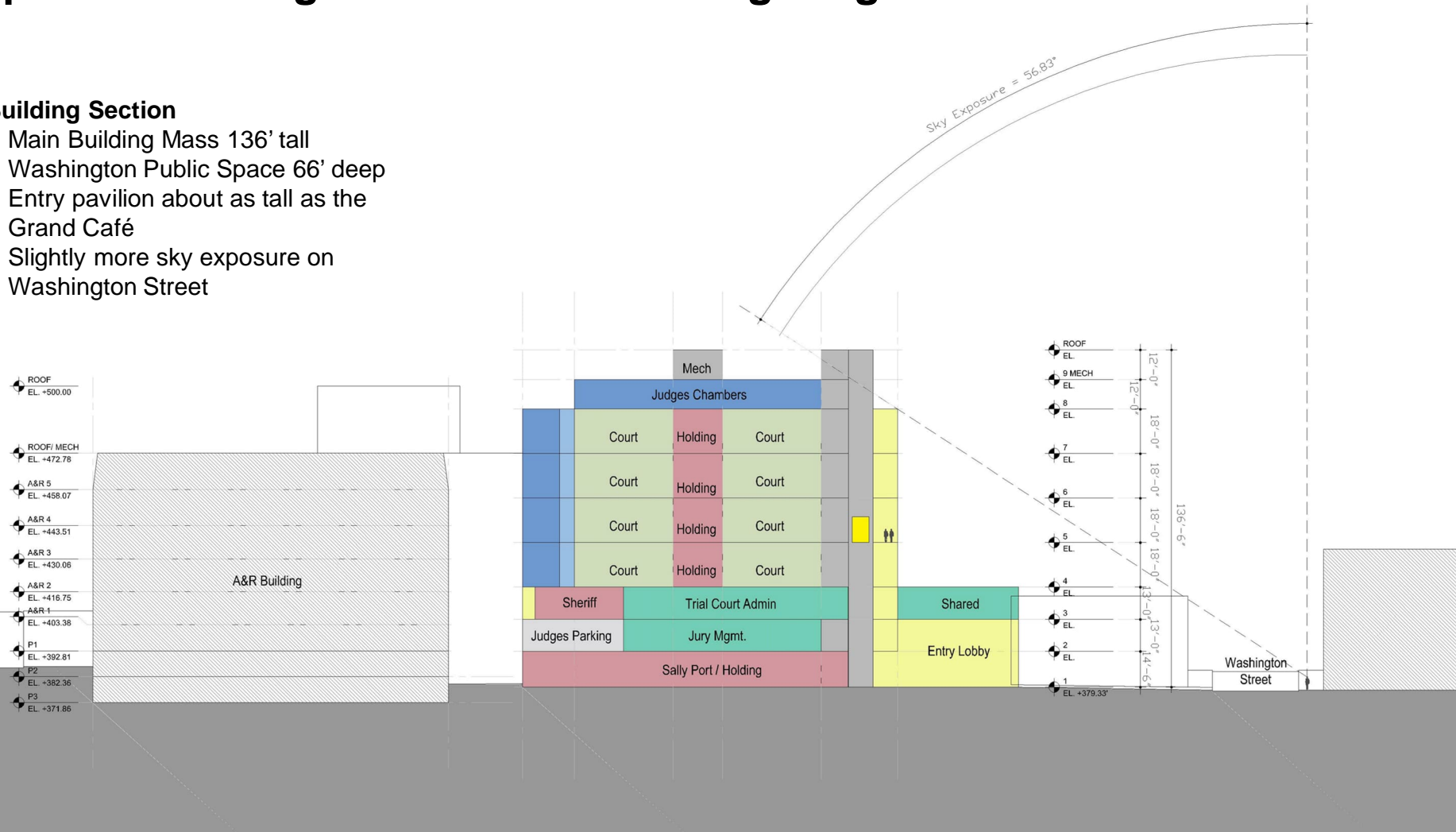
Typical Court Level Plan

- Compact building footprint
- Clear public circulation facing Washington and Schulyer
- Both courtrooms have direct access to PIC holding area

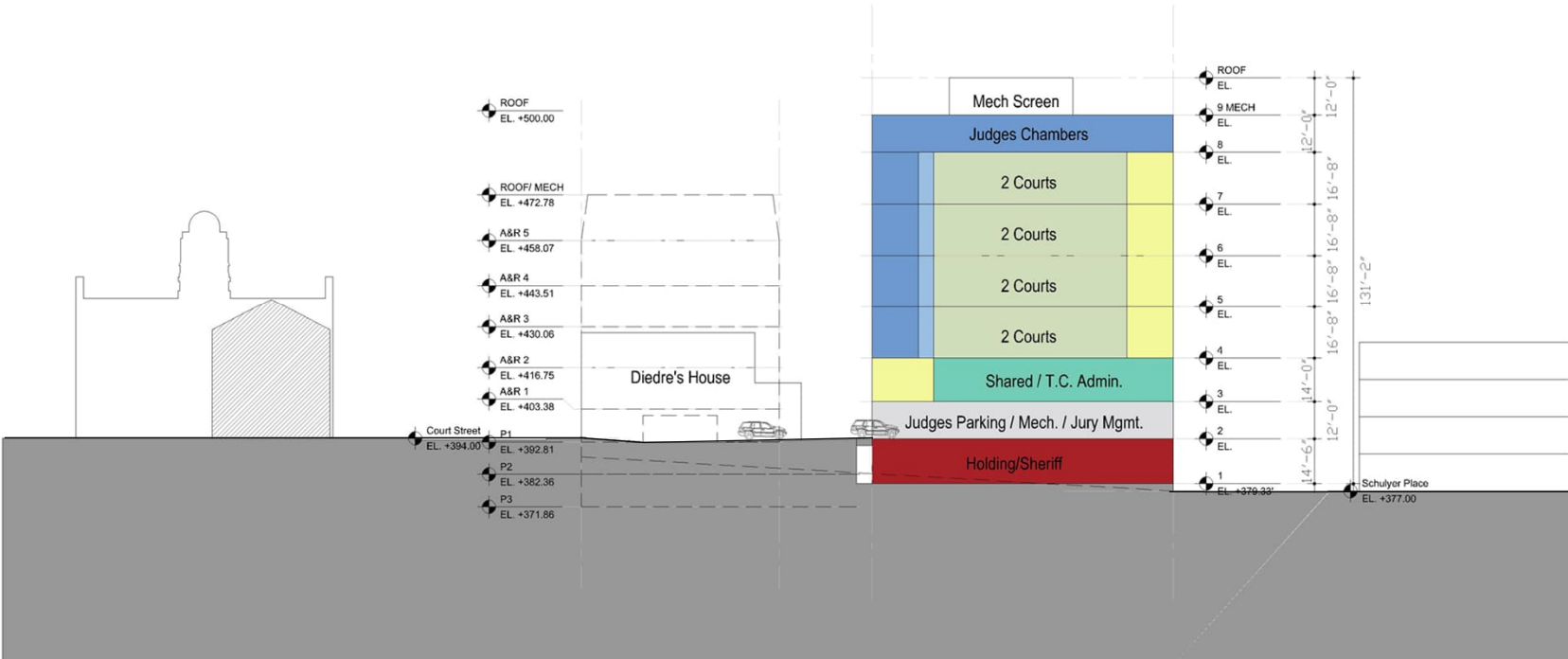
2022 Proposed Building Section and Stacking Diagram

Building Section

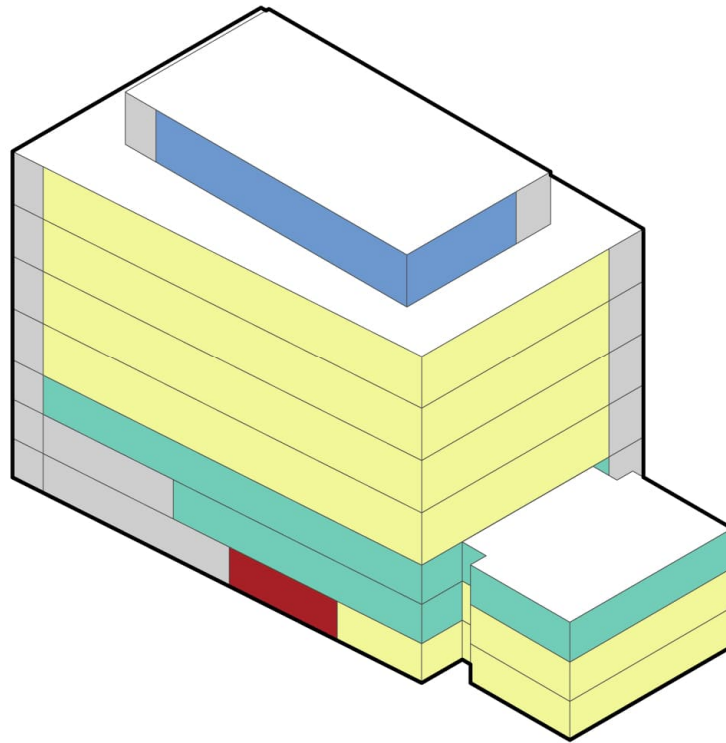
- Main Building Mass 136' tall
- Washington Public Space 66' deep
- Entry pavilion about as tall as the Grand Café
- Slightly more sky exposure on Washington Street



2022 Proposed Building Section and Stacking



2022 Proposed Building Section Diagram

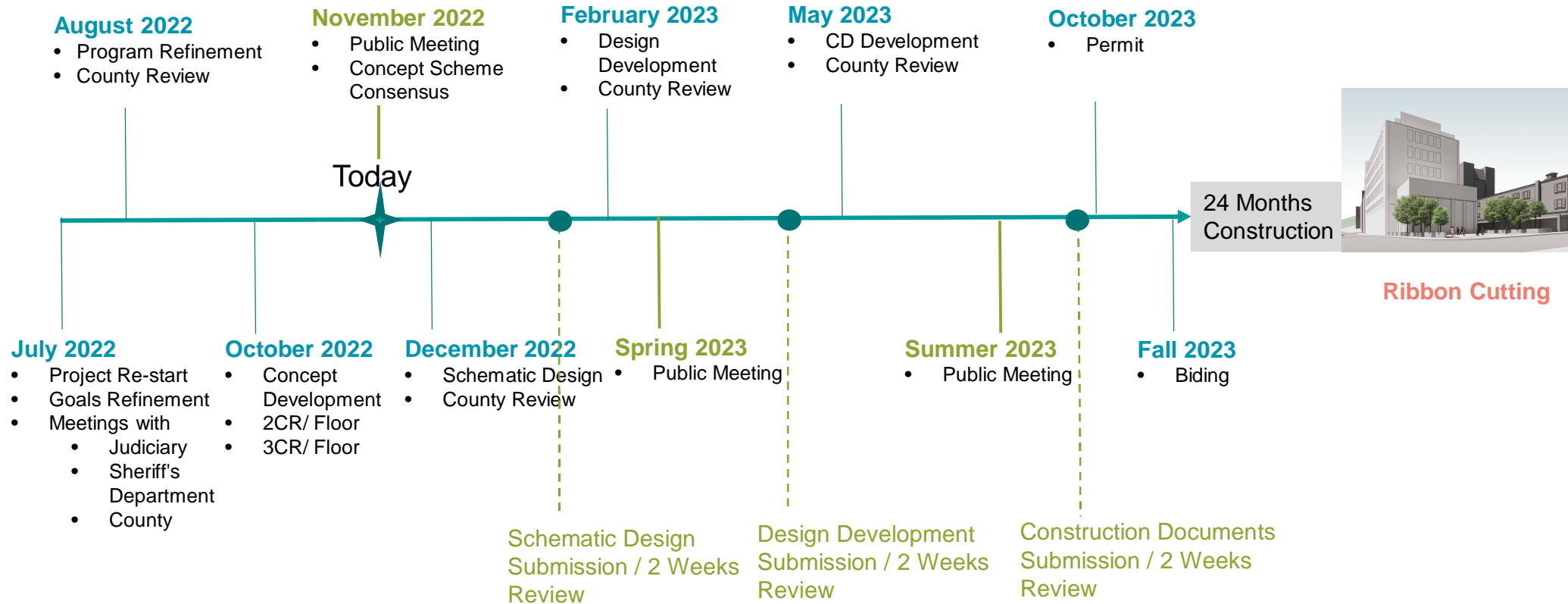


- Public Circulation
- Judges Chambers
- Staff Offices
- Secure Vestibule
- MEP/ Stairs

2022 Preliminary Massing (View From Washington Street)



Proposed Schedule



Thank you.