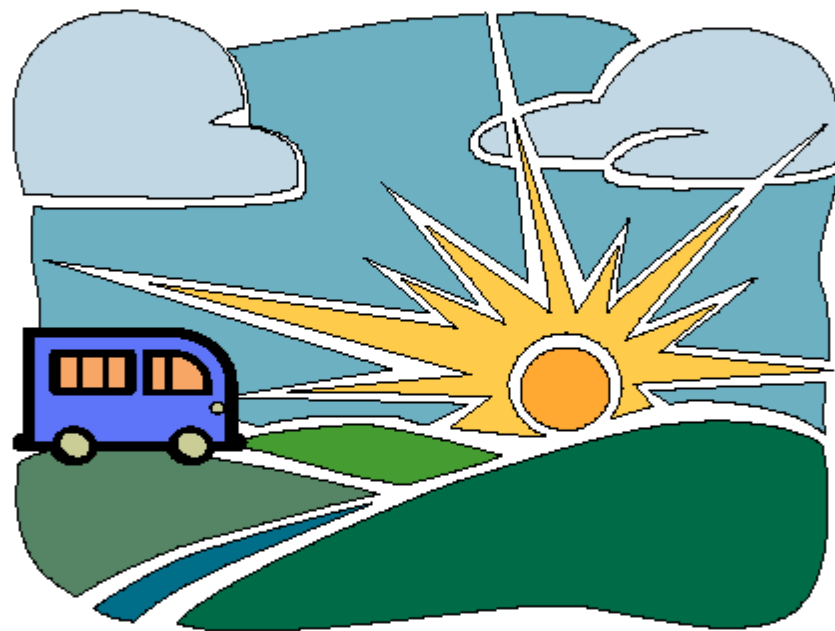


MORRIS COUNTY TRANSPORTATION



*A GUIDE TO TRANSPORTATION SERVICES
THROUGHOUT MORRIS COUNTY*

INTRODUCTION

This guide to transportation options has been compiled by the Morris County Office of Aging, Disabilities and Community Programming and can be reached by calling Morris County Aging & Disability Resource Connection 1 (800) 564-4656. In keeping with the tradition of “reaching out” to the disabled and senior community, we have developed this booklet as a tool to help you gain better access to the services available. By combining county, municipal and private not-for-profit sponsored transportation services in one directory, we hope that it will serve as a comprehensive guide.

Many of the services listed in this directory require that appointments be scheduled ahead of time. Please call the service provider to determine how much advance notice is needed.

The Morris County Department of Human Services cannot warrant or guarantee the quality of service provided by any transportation provider.

We hope that this directory makes your travels through Morris County easier.

Revised 2022

Call your town to schedule a pickup:

Boonton

Boonton Senior Transport

(973) 402-9410 X 631

Seniors 55+ years (Boonton residents only)

Office Hours: Monday – Friday, 8:30 a.m. – 4:00 p.m.

Vehicle Operation: Monday – Friday, 9:00 a.m. – 2:30 p.m. (6 mile radius)

Reservations required 24 hours in advance or more

Curb-to-curb service

Not handicapped accessible

Passengers must be able to board and disembark without assistance.

Boonton Township

See Montville

Budd Lake

See Mount Olive Township

Butler Borough

Five Town Regional Dial-A-Ride, Inc.

(973) 835-8885

(Includes Kinnelon, Lincoln Park, Township of Pequannock and Riverdale)

Seniors 55+ years; Veterans; and Disabled 18 years + w/ Lift

Office Hours: Monday – Friday, 8:30 a.m. – 4:30 p.m.

Vehicle Operation: Monday – Friday, 8:30 a.m. – 4:30 p.m.

Reservations required 72 hours in advance or more

Handicapped Accessible

Curb-to-Curb Service

Will not transport inpatient released from hospital

Will travel out of town approximately 30 minutes

Chatham Borough and Township

Senior bus service / Seniors 60+ (973) 635-4565

Office Hours: Monday – Friday 9:00am – 2:00pm

Vehicle operation: Tuesday, Thursday, Friday 9:15am – 1:45pm

Reservations required 24 hours in advance

Not handicapped Accessible

Medical appointments

Curb-to-curb service

Food shopping with occasional mall shopping. Travel within the Chathams and Madison / medical transport (sometimes outside Chatham) New Providence, Berkeley Heights, Summit - - one day a week.

Chester Township

Senior Bus Service

908-879-5100 X 390

Office Hours: Monday – Thursday, 9:00 am – 3:00 pm (leave message)

Vehicle Operation: Monday – Thursday, 9:00 am – 2:00 pm

Vehicle is not handicapped accessible

Denville Township

Denville Dial A Ride

(973) 625-7799

Seniors 55+, Disabled 18+ and Veterans

Office Hours: Monday - Friday 7:30 a.m. - 3:30 p.m.

Vehicle Operation: Monday - Friday 7:30 a.m. - 3:00 p.m.

Reservations required 72 hours in advance

Medical appointments (8-mile radius from Denville Municipal Building)

Dover

Dover Dial A Ride

(973) 366-2200 X 1131

Seniors & Disabled 55+ years

Office Hours: Monday – Friday, 8:00 a.m. – 2:30 p.m.

Vehicle Operation: Monday – Friday, 9:00 a.m. – 3:00 p.m.

Reservations required 48 hours in advance

Handicapped Accessible

Transportation provided within a 1 mile radius for medical, food shopping, & social services

Dover Residents only

Service not available for Victory Gardens or Wharton

East Hanover

East Hanover Senior Dial A Ride

(973) 428-3029

Both Seniors & Disabled MUST be 60+ years

Call In Time: Monday – Friday, 7:00 a.m. – 3:00 p.m.

Vehicle Operation: Monday – Friday, 7:30 a.m. – 3:30 p.m.

Reservations required

Handicapped Accessible

Door-to-Door Service Available

East Hanover residents only

Florham Park

No services available

See other transportation services

Hanover Township

Dial a Ride w/ Lift

(973) 428-2498

(Includes Whippany and Cedar Knolls)

Seniors & Disabled

Office Hours: Monday – Friday, 9:00 a.m – 12:00 p.m.

Vehicle Operation: Monday - Thursday, 9:00-4:00PM and Friday, 8:00-1:00PM

Call in time: Between 9:00 a.m. – 12:00 p.m.

Reservations required 48 hours in advance

Handicapped Accessible

Door-to-Door Service Available

#1 Priority – Medical Appointments

#2 Priority – Food Shopping

Harding Township

No services available

See other transportation services

Jefferson Township

Dial A Ride

(973) 208-6123

Seniors & Disabled w/ Lift

Office Hours: Monday – Friday, 8:00 a.m. – 3:30 p.m.

Vehicle Operation: Monday – Friday, 9:30 a.m. – 2:00 p.m.

Reservations required: 48 hours in advance for medical appointments & 24 hours in advance for shopping

Handicapped Accessible

Kinnelon

See Butler

Lincoln Park

See Butler

Long Hill

Dial A Ride

(908) 647-8000 x 235

Residents 55+ years without other transportation means, or limited driving capability

Office Hours: Monday – Friday, 10:00 a.m. – 12:00 p.m.

Vehicle Operation: Tuesday/Wednesday/Thursday 9:00 a.m. – 12:00 p.m., or later if necessary

Reservations required 48 hours in advance

Handicapped Accessible

Door-to-Door Service Available

Madison

Dial A Ride Senior Services

(973) 593-3095

60+ years w/ Lift (wheelchair passengers must have aide or companion)

Call In Time: Monday – Friday, 8:30 a.m. – 9:00 a.m. for same day service within Madison

Hours of Vehicle Operation: Monday – Friday, 9:00 a.m. – 2:15 p.m.

Handicapped Accessible

Door-to-Door service available for food shopping, senior center, hair appointments, YMCA, other appointments within borough boundaries

Passengers must be able to board and disembark from van without assistance

Mendham Borough & Mendham Township

Mendham Area Senior Transportation (MAST)

(973) 543-2666

<http://mashnj.org/transportation.html>

Seniors & disabled 18+ years

Vehicle Operation: Monday & Tuesday, 9:00-3:00 and Wednesday - Friday, 9:00-12:30PM

Not Handicapped Accessible

Passengers must be able to board and disembark without assistance

Curb-to-curb service

Mine Hill

Mine Hill Van

(973) 270-5804

Seniors & disabled

Vehicle Hours: Tuesday: 9:30 a.m. – 1:30 p.m.

Office Hours: Monday – Friday, 9:00 a.m. – 4:30 p.m.

Reservations required 48 hours in advance. Not Handicapped Accessible

Passengers must be able to board and disembark without assistance.

Door-to-Door Service Available

Montville

Montville Township Dial A Ride

(973) 331-3336

55+ years (no disabled; call if you have questions about transport)

Vehicle Operation: Monday – Friday, 9:30 a.m. – 3:00 p.m.

Office Hours: Monday – Friday, 9:00 a.m. – 12:00 p.m.

Advance reservation required 24 hours in advance

Handicapped Accessible

Must reside in either Montville or Boonton Township

All participants must be ambulatory unless have own wheelchair and escort

Curb-to-curb Service Available

Morris Plains

Dial A Ride

(973) 267-1116

60+ years only

Office Hours: Monday – Thursday, 8:30 a.m. – 1:00 p.m.

Reservations required 48 hours in advance

Not Handicapped Accessible – Transports only within 5 mile radius

Morris Township & Morristown

Colonial Coach

(973) 267-2733

Office Hours: Monday – Saturday, 9:00 a.m. – 4:00 p.m.

Vehicle Operation: Monday – Saturday, 9:00 a.m. – 4:00 p.m.

No Reservations required

Not Handicapped Accessible

Two routes; call to see which bus route is operating

Mt. Arlington

Dial A Ride

(973) 398-2413

Seniors & Disabled

Office Hours: Monday Friday 7:30 a.m. – 3:30 p.m.

Vehicle Operation: Monday – Friday, 8:00 a.m. – 3:30 p.m.

Reservations required 48 hours in advance

Leave message – will get a call back for medical appointments, nutrition site, and food shopping

#1 Priority: Medical Appointments

Mt. Olive

Mt. Olive Senior Transit

(973) 691-0900 X 7365

(Includes Budd Lake and Flanders Areas)

Resident Seniors 55+ years and disabled

Office Hours: Monday – Friday, 8:30 a.m. – 4:30 p.m.

Vehicle Operation: Monday – Friday, 9:00 a.m. – 3:00 p.m.

Handicapped Accessible

Call at least 7 days in advance for medical appointments

Transports to Hackettstown, Dover, Roxbury, Chester and Randolph

Mountain Lakes

No services available

See other transportation services

Netcong

Netcong Dial A Ride

(973) 347-0252 X 116 (Leave Message)

Seniors & Disabled

Office Hours: Monday – Friday, 9:00 a.m. – 4:00 p.m.

Vehicle Operation: Monday – Friday, 8:00 a.m. – 1:00 p.m.

Reservations required – prefer 48 hours in advance and on a first come, first serve basis

Handicapped Accessible

Transports only within a 15 mile radius

Parsippany-Troy Hills

Parsippany Medical Driver

(973) 263-7160

Seniors & Disabled

Office Hours: Monday – Friday, 9:00 a.m. – 5:00 p.m.

Vehicle Operation: Monday – Friday, 9:00 a.m. – 2:30 p.m.

Reservations required at least 7 days in advance

Curb-to-Curb pick up and drop off: passenger must be able to board vehicle on their own

Parsippany Residents Only – Passenger must be ambulatory

Parsippany Office on Aging

(973) 263-7351

Seniors & Disabled – 2 Cars Available

Office Hours: Monday – Friday, 9:00 a.m. – 5:00 p.m.

Vehicle Operation: Monday – Friday, 10:00 a.m. – 2:30 p.m.

Reservations required at least 7 days in advance

Curb-to-Curb pick-up and drop-off: passenger must be able to board vehicle on their own

Passenger must be ambulatory.

Parsippany-Troy Hills Free Transit System

(973) 263-7093

Free transit system for residents

Bus Operation: Monday – Friday, 9:00 a.m. – 4:00 p.m.

Limited service available Saturday morning

Two buses run on the hour starting at the Morris Hills Shopping Center

No service between 12:00 p.m. – 1:00 p.m. or on holidays

Pequannock

See Butler

Randolph

Randolph Dial A Ride

(973) 989-7084

Seniors 60+ years & Disabled w/ Lift

Office Hours: Monday – Friday, 8:30 a.m. – 4:30 p.m.

Vehicle Operation: Monday – Thursday, 9:00 a.m. – 3:00 p.m.

Reservations required 24 hours in advance for shopping & nutrition

1 week notice for medical appointments (call as soon as appointment is scheduled)

***Not* Handicapped Accessible**

Passengers must be able to board and disembark without assistance

Medical appointments must be in Morris County

Randolph Residents only

Riverdale

See Butler

Rockaway Borough

Seniors & Disabled

(973) 627-2000

Office Hours: Monday – Friday 8:30 a.m. – 4:30 p.m.

Vehicle Operation: Tuesday and Thursday, 9:30 a.m. - 11:30 a.m.

Tuesday: Rockaway Mall

Wednesday and Friday: ShopRite, Pathmark, Acme

No medical appointments

Reservations required at least 1 day in advance

Handicapped Accessible

Rockaway Township

Rockaway Twp. Dial A Ride Office

(973) 983-2839 – leave message for reservations

Senior 55 + years and Disabled 21+ years

Office Hours: Monday – Friday, 9:00 a.m. – 5:00 p.m.

Vehicle Operation: Monday – Friday, 8:00 a.m. – 1:30 p.m.

Reservations required 1 week in advance

Handicapped Accessible

Transportation is provided for any type of doctor services, health related issues, and nutrition

Rockaway Township Residents only

Roxbury Township

Dial A Ride

(973) 448-2058

Seniors & Disabled

Office Hours: Monday – Friday, 8:00 a.m. – 3:00 p.m.

Vehicle Operation: Monday – Friday, 7:00 a.m. – 2:30 p.m.

Reservations required 24 hours in advance, but no more than 5 working days in advance

Handicapped Accessible

Door-to-Door Service Available

Victory Gardens

No municipal services available

See other transportation services

Washington Township

Senior Transportation

Residents age 55+

908-876-8623

Office Hours: Anytime, leave message

Vehicle Operation: Monday – Friday, 9:30 am – 1:30 pm

Reservations required two weeks in advance

Handicapped accessible w/ lift.

Wharton

Senior Citizens Transport

(973) 659-9111 – Leave message on answering machine

Office Hours: 8:30 a.m. – 4:30 p.m.

Vehicle Operation: Monday - Friday, 9:00-2:00PM

Handicapped accessible van

Must make reservation 48 hours in advance

Need I.D. card to ride bus. Call Borough Hall for general information: (973) 361-8444

Morris Area Paratransit System (MAPS)

MAPS is a curb-to-curb shared ride transportation service available to Morris County residents. This service is for senior citizens, people with disabilities, and veterans. We also provide transportation to the general public who live in rural areas of the county.

Use MAPS for medical transportation, social services, and grocery shopping!

Contact Us

Phone

[\(973\) 829-9103](tel:(973)829-9103)

Email

maps@co.morris.nj.us

Morris County Shuttle Service

We offer a **free** shuttle for our residents to get to various county offices:

- Downtown Morristown -- Admin & Records Building and Schuyler Annex (30 Schuyler Place)
- Office of Temporary Assistance (OTA) (340 W. Hanover Ave)
- Behavioral Health and Workforce Development (1 Medical Drive)

The shuttle runs Monday through Friday (excluding holidays).

Arrive at the below locations on schedule to pick up the shuttle. No pre-registration is necessary.

Monday - Friday Schedule			
Time	Pick-Up	Stop 1	Stop 2
10:30AM	30 Schuyler Place, Morristown	340 W. Hanover Ave (OTA)	1 Medical Drive, Morris Plains
1:15PM	340 W. Hanover Ave (OTA)	1 Medical Drive, Morris Plains	30 Schuyler Place, Morristown
1:35PM	30 Schuyler Place, Morristown	340 W. Hanover Ave (OTA)	1 Medical Drive, Morris Plains
4:30PM	340 W. Hanover Ave (OTA)	1 Medical Drive, Morris Plains	30 Schuyler Place, Morristown

OTHER TRANSPORTATION SERVICES

ATLANTIC PRIVATE CARE: (973) 540-9000

COACH USA: COMMUNITY COACH (800) 877-1888

Community Coach, a member of Coach USA, provides service from Morris and Essex Counties to the New York City Port of Authority Bus Terminal.

www.coachusa.com/community

LAKELAND BUS LINES, INC. (973) 366-0600

Local service between Morris and Sussex Counties as well as service to New York City including the Port Authority Bus Terminal, Midtown Manhattan and Lower Manhattan.

www.lakelandbus.com

MORRIS COUNTY OFFICE OF TEMPORARY ASSISTANCE (866) 527-9933/9934

Medical Appointment Transportation - **Logisticare of New Jersey**

Office Hours: Monday - Friday 8:00 a.m. - 4:00 p.m.

Vehicle Operation: Monday - Friday 8:30 a.m. - 4:30 p.m.

Reservations required 2 days in advance

Must have name and address of Doctor

Must have valid Medicaid Number

MORRIS COUNTY ORGANIZATION FOR HISPANIC AFFAIRS

Seniors, Veterans and Low Income in Morris County **(973) 366-4770 X 10 or 18**

Office Hours: Monday - Friday 9:00 a.m. - 11:00 a.m.

Vehicle Operation: Monday - Friday 7:30 a.m. - 3:30 p.m.

Reservations required 48 hours in advance

Not Handicapped Accessible

No Emergency Services

Curb-to-Curb Service

NJ TRANSIT (973) 275-5555 TTY (800) 772-2287

NJT is a statewide public transportation system serving the state of New Jersey and Orange and Rockland counties in New York. It operates bus, light rail, and commuter rail services throughout the state, notably connecting to major commercial and employment centers both within the state and in the adjacent cities of New York and Philadelphia.

www.njtransit.com

NJ TRANSIT / ACCESS LINK (800) 955-2321 TTY: (800) 955-6765

Access Link is a paratransit service for people with disabilities who are unable to use the local fixed route NJ Transit bus services and live within $\frac{3}{4}$ mile of an eligible bus route. Access Link service is only available during the same days and hours as the regularly scheduled local fixed route bus service, including weekends and holidays. In order to use Access Link, you must first call for eligibility and reservations.

www.njtransit.com

NJ TRANSIT / MORRIS COUNTY METRO (MCM) (973) 275-5555 TTY (800) 772-2287

MCM provides service within Morris County and between Morris, Essex, Passaic, and Sussex Counties as well as service to New York City, five or six days a week.

www.morrisdot.org

2022



A Publication of the Morris County Board of Commissioners