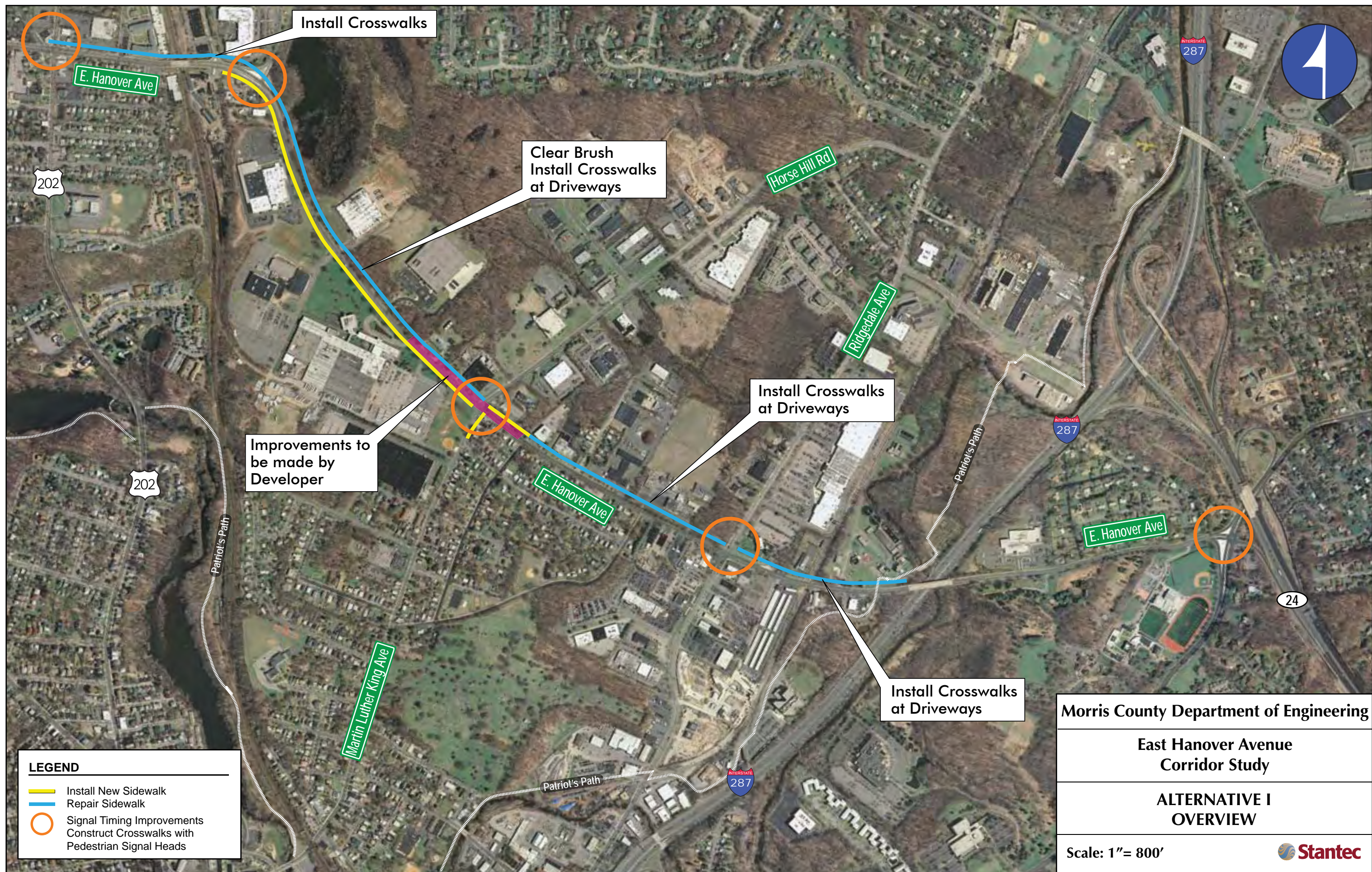
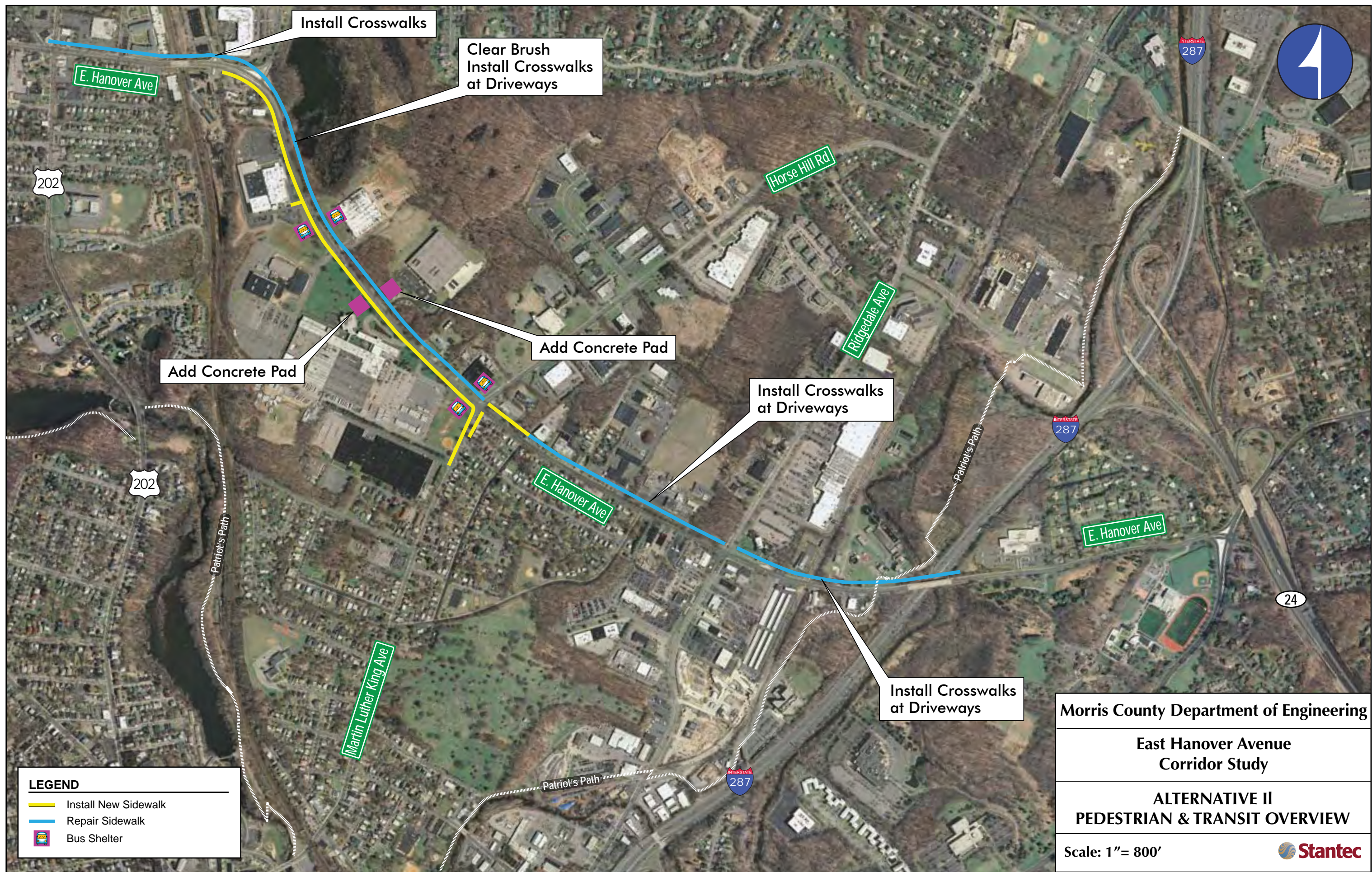




APPENDIX A: CONCEPT PLANS





MORRIS PLAINS BORO

MORRIS COUNTY



COUNTY IMPROVEMENTS

160' 80' 0 160' 320'

MORRIS COUNTY DEPARTMENT OF ENGINEERING

EAST HANOVER AVE. CORRIDOR STUDY

ALTERNATIVE 2
E. HANOVER AVE./W. HANOVER AVE. AND
ROUTE US 202 (SPEEDWELL AVE.)

RE-STRIPE EXISTING PAVEMENT AND ADD
CHANNELIZED RIGHT TURN LANES

MORRIS TOWNSHIP

MORRIS COUNTY

FILE NAME: U:\192310414 CADD\192310414.dgn
DATE: 03/20/22
TIME: 1:43:23 PM
USER: harriss

DESIGNED BY: _____
DETAIL CHECKED BY: _____

DESIGNED BY: _____
DETAIL CHECKED BY: _____

IN CHARGE OF: _____



MORRIS PLAINS BORO

MORRIS COUNTY



100' 50' 0 100' 200'

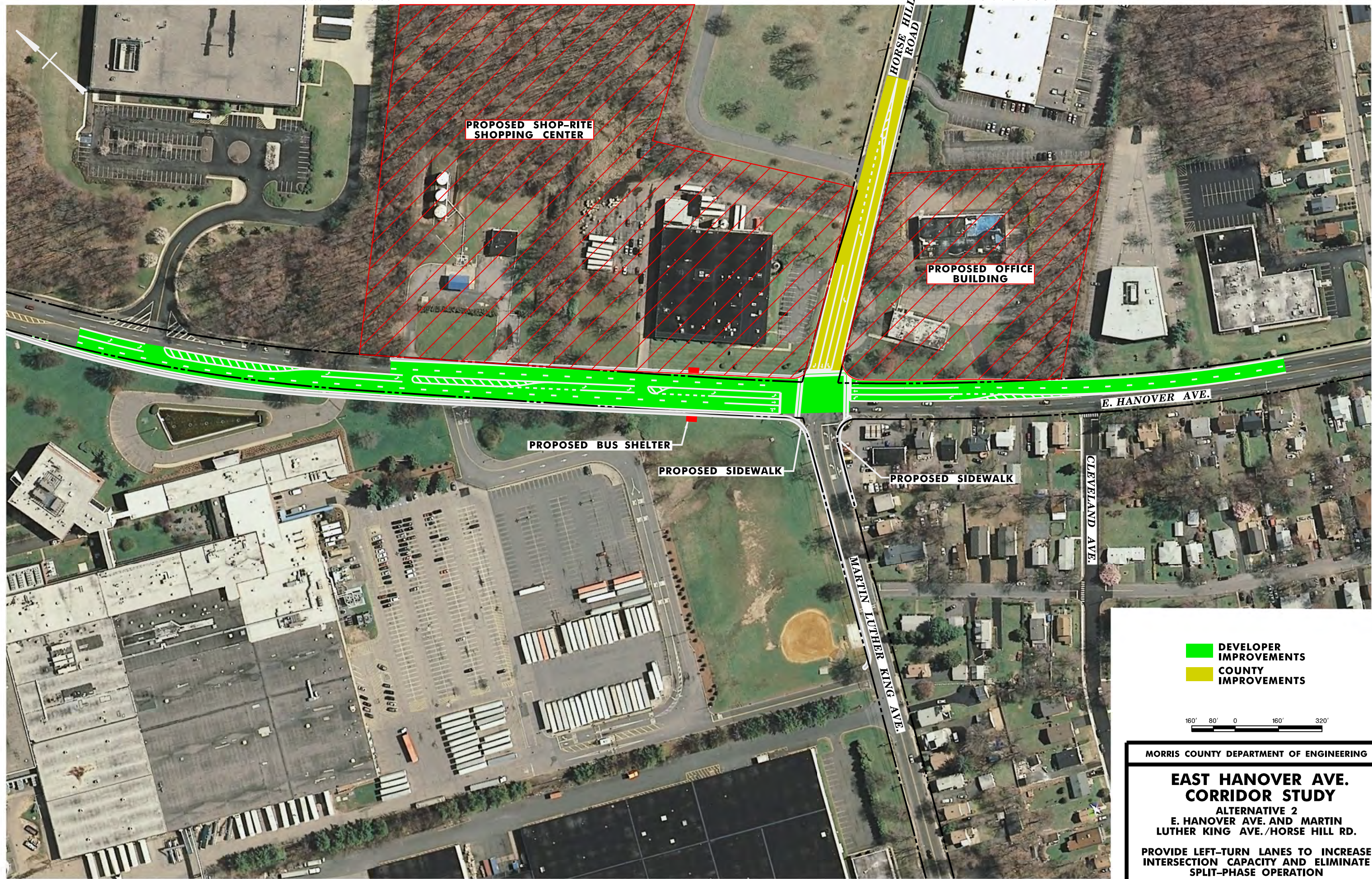
MORRIS COUNTY DEPARTMENT OF ENGINEERING

EAST HANOVER AVE. CORRIDOR STUDY

ALTERNATIVE 2
E. HANOVER AVE. AND THE AMERICAN RD.
NEW CROSSWALKS AND SIDEWALK

MORRIS TOWNSHIP

MORRIS COUNTY



**DEVELOPER
IMPROVEMENTS**

**COUNTY
IMPROVEMENTS**



MORRIS COUNTY DEPARTMENT OF ENGINEERING

EAST HANOVER AVE. CORRIDOR STUDY

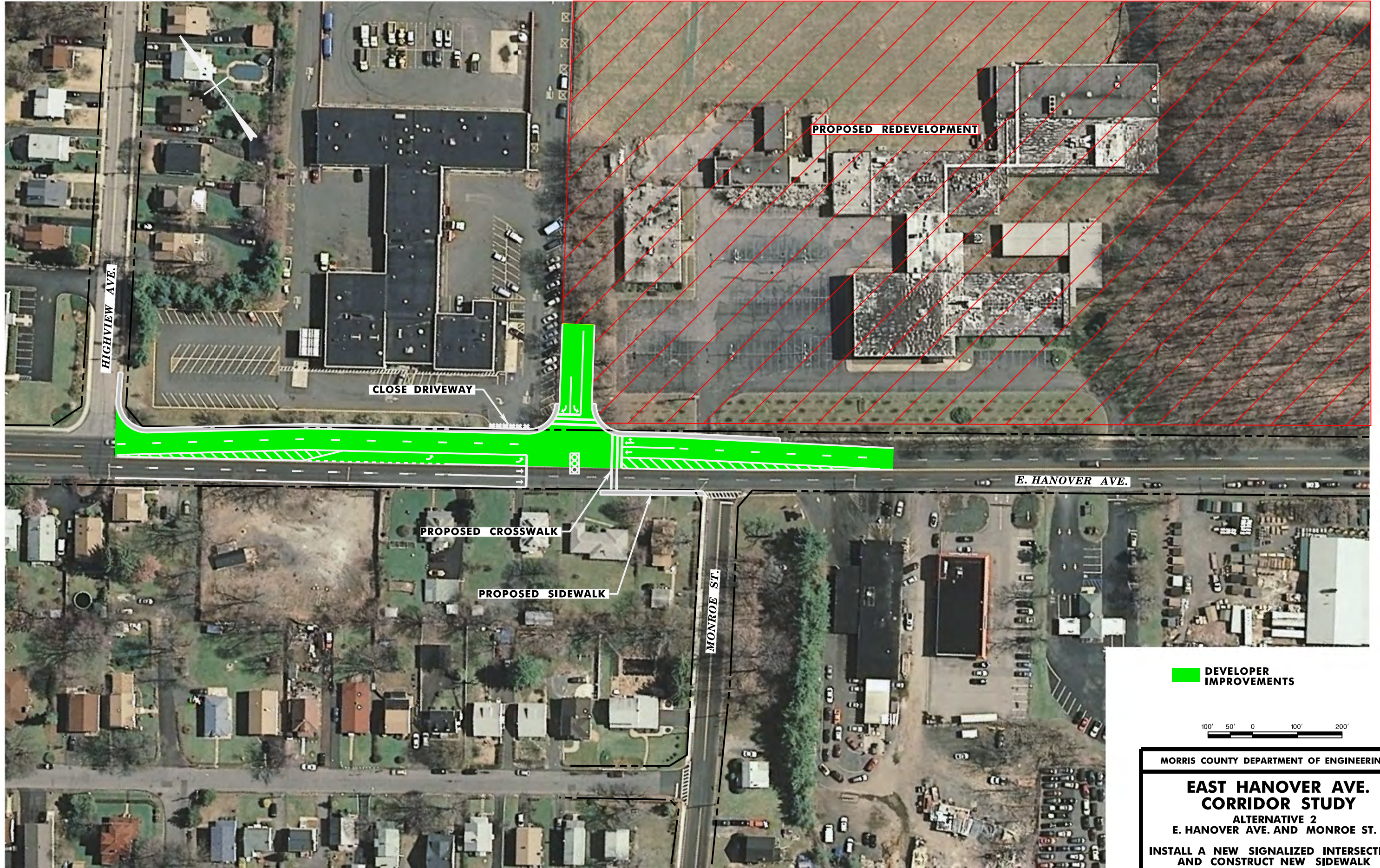
**ALTERNATIVE 2
E. HANOVER AVE. AND MARTIN
LUTHER KING AVE./HORSE HILL RD.**

**PROVIDE LEFT-TURN LANES TO INCREASE
INTERSECTION CAPACITY AND ELIMINATE
SPLIT-PHASE OPERATION**



HANOVER TOWNSHIP

MORRIS COUNTY



 **DEVELOPER
IMPROVEMENTS**



MORRIS COUNTY DEPARTMENT OF ENGINEERING

EAST HANOVER AVE. CORRIDOR STUDY

ALTERNATIVE 2
E. HANOVER AVE. AND MONROE ST.

INSTALL A NEW SIGNALIZED INTERSECTION
AND CONSTRUCT NEW SIDEWALK

MORRIS TOWNSHIP

MORRIS COUNTY

FILE NAME: U:\19231041\CDOP\Hudson\1022\Hudson.dgn
DATE: 03/20/20
TIME: 10:28:38 PM
USER: hudson

DESIGNED BY: _____
DETAIL CHECKED BY: _____

IN CHARGE OF: _____

CONTRACT NO. _____
PROJECT NO. _____
SHEET NO. _____



HANOVER TOWNSHIP

MORRIS COUNTY



MORRIS TOWNSHIP

MORRIS COUNTY

**DEVELOPER
IMPROVEMENTS**

**COUNTY
IMPROVEMENTS**



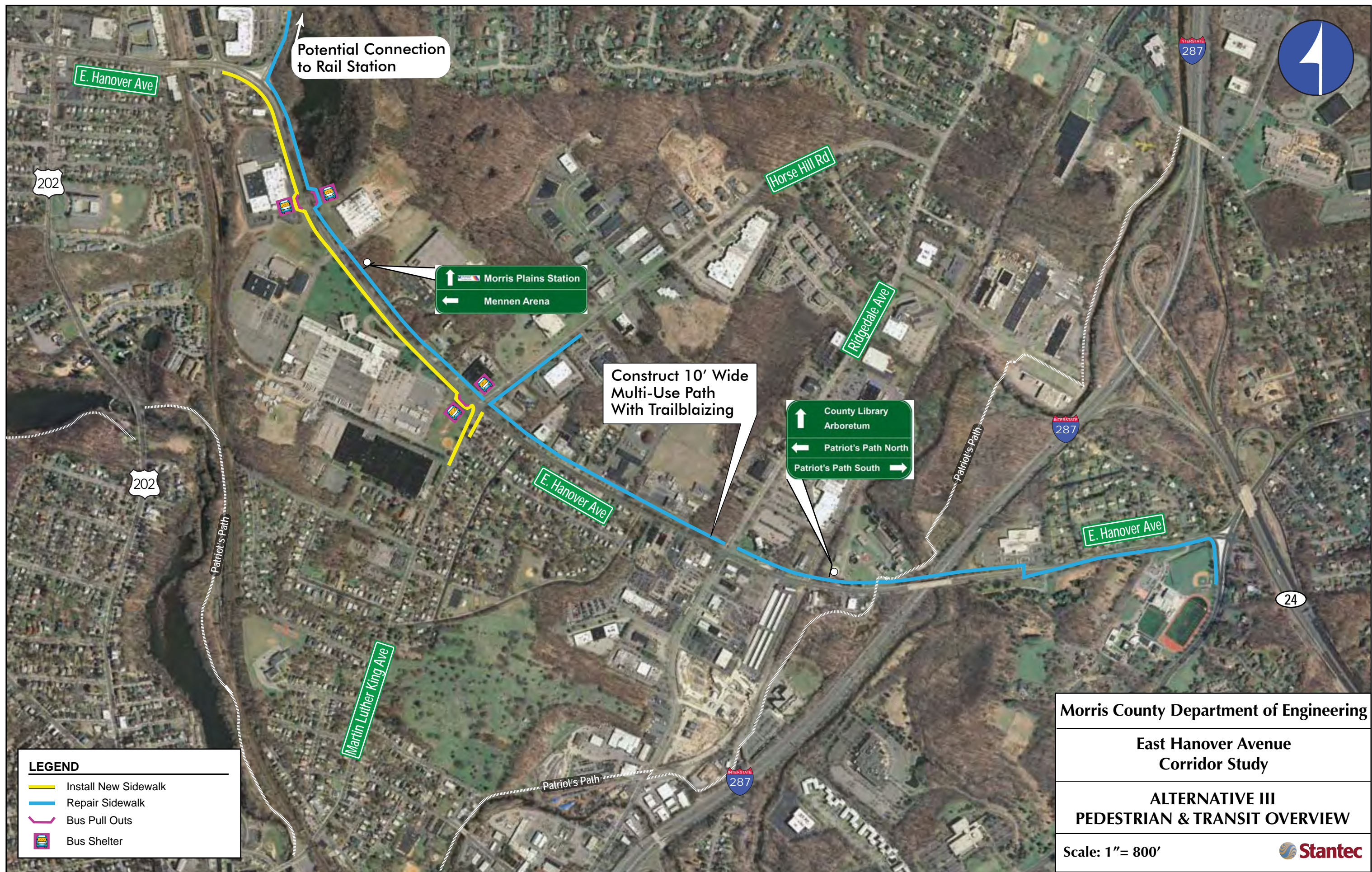
MORRIS COUNTY DEPARTMENT OF ENGINEERING

EAST HANOVER AVE. CORRIDOR STUDY

ALTERNATIVE 2

E. HANOVER AVE. AND RIDGEDALE AVE.

PROVIDE ADDITIONAL TURN AND THRU
LANES TO INCREASE INTERSECTION CAPACITY



LEGEND

- Install New Sidewalk
- Repair Sidewalk
- Bus Pull Outs
- Bus Shelter

Morris County Department of Engineering

East Hanover Avenue
Corridor Study

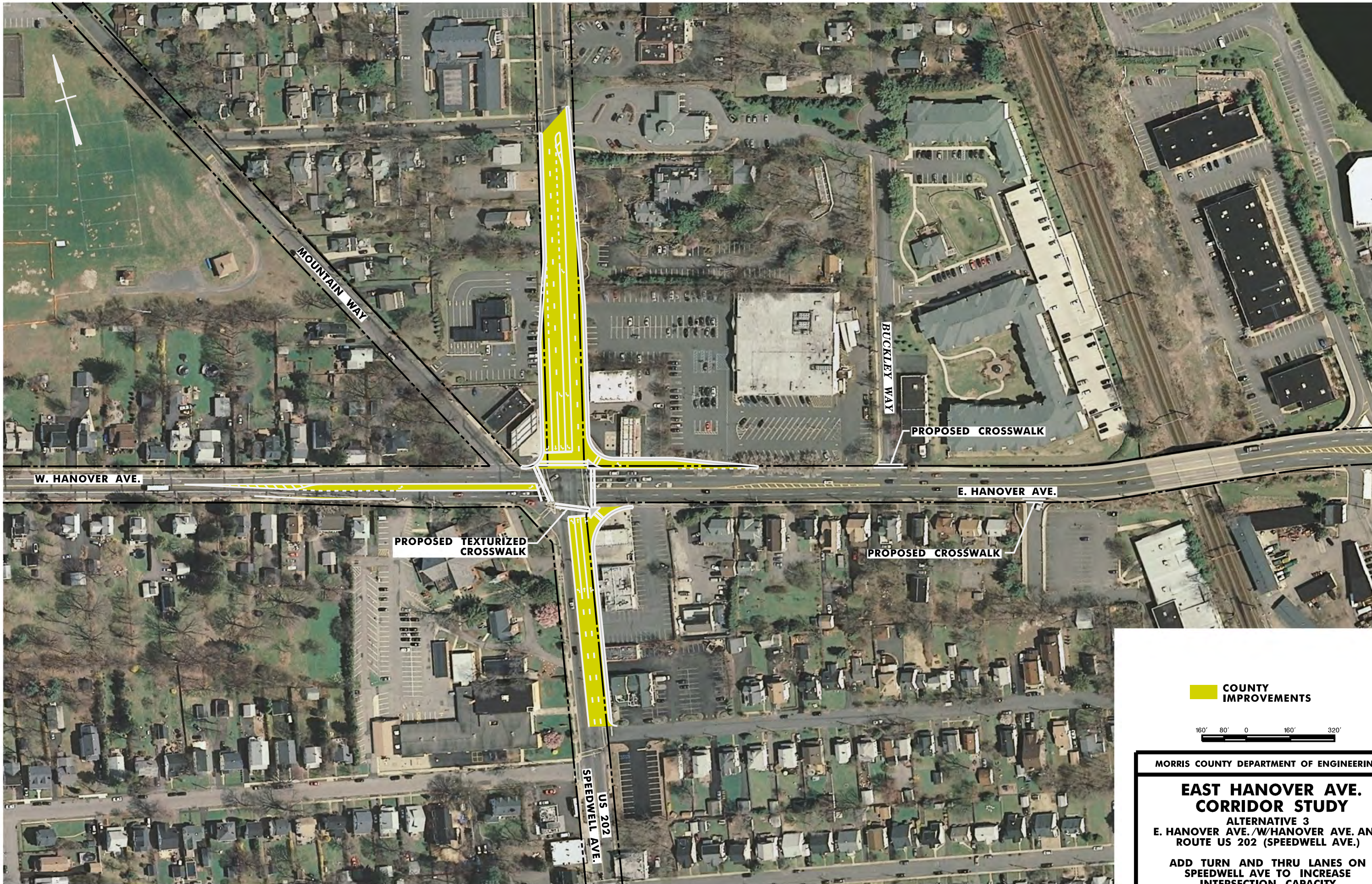
ALTERNATIVE III
PEDESTRIAN & TRANSIT OVERVIEW

Scale: 1"= 800'



MORRIS PLAINS BORO

MORRIS COUNTY



COUNTY IMPROVEMENTS

160' 80' 0 160' 320'

MORRIS COUNTY DEPARTMENT OF ENGINEERING

EAST HANOVER AVE. CORRIDOR STUDY

ALTERNATIVE 3
E. HANOVER AVE./W.HANOVER AVE. AND
ROUTE US 202 (SPEEDWELL AVE.)

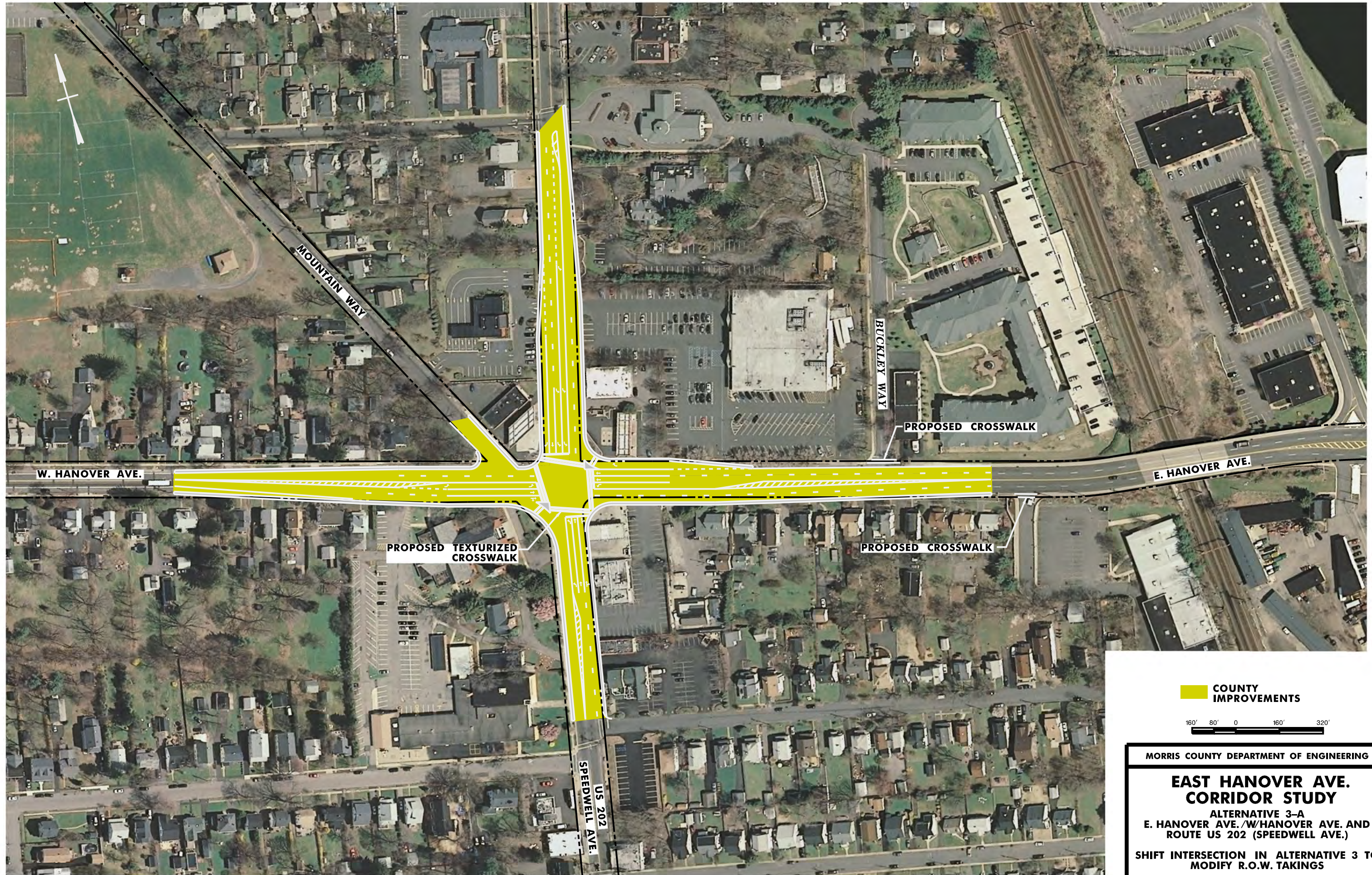
ADD TURN AND THRU LANES ON
SPEEDWELL AVE TO INCREASE
INTERSECTION CAPACITY

MORRIS PLAINS BORO

MORRIS COUNTY

FILE NAME: U:\192310414 CADD\Hudson\Alt3A-US202.dgn
DATE: 03/20/22
TIME: 10:45:18 PM
USER: hudson

DESIGNED BY: _____
DETAIL CHECKED BY: _____
IN CHARGE OF: _____



COUNTY IMPROVEMENTS

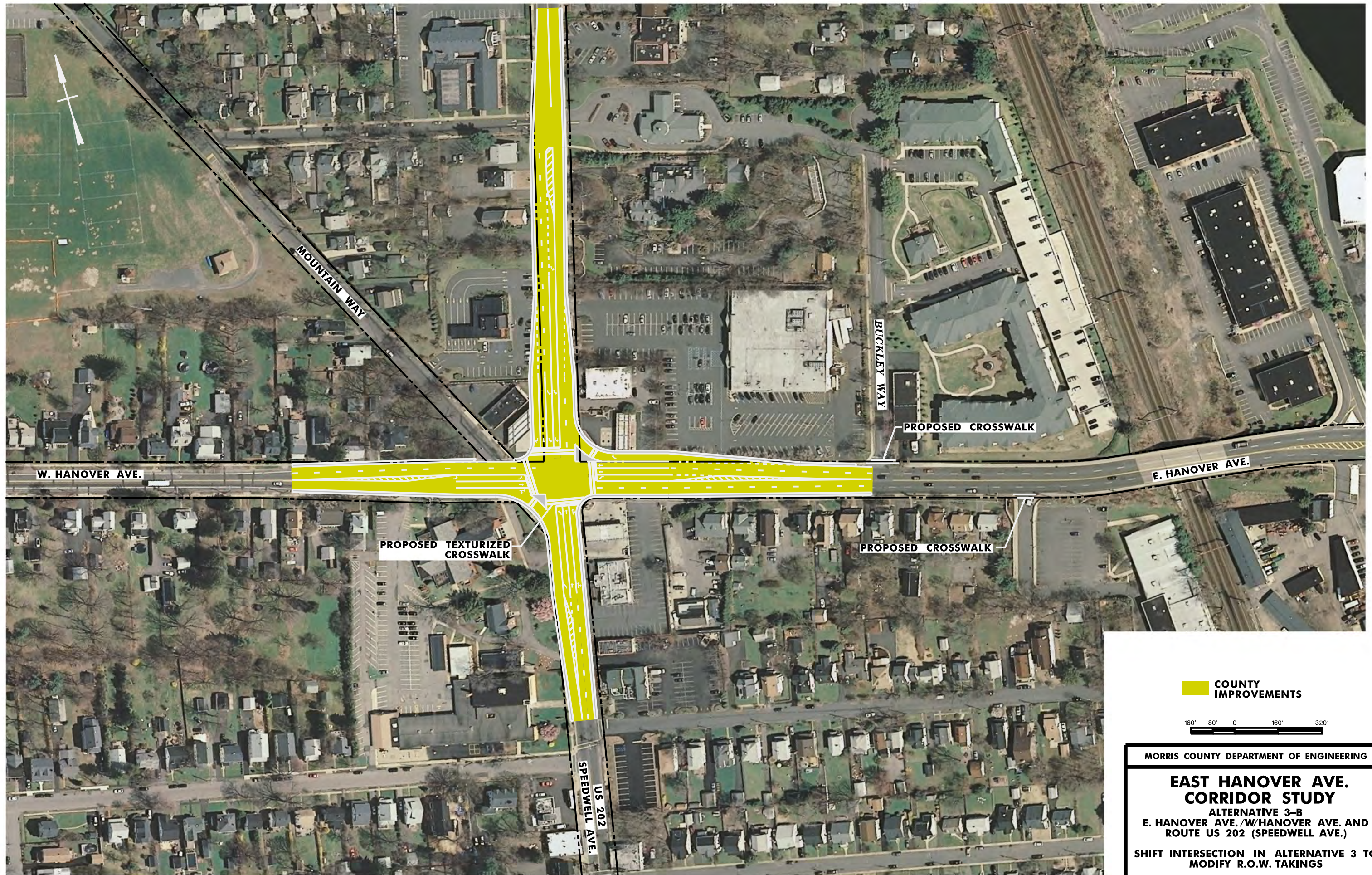


MORRIS COUNTY DEPARTMENT OF ENGINEERING

EAST HANOVER AVE. CORRIDOR STUDY

ALTERNATIVE 3-A
E. HANOVER AVE./W.HANOVER AVE. AND
ROUTE US 202 (SPEEDWELL AVE.)

SHIFT INTERSECTION IN ALTERNATIVE 3 TO
MODIFY R.O.W. TAKINGS



**COUNTY
IMPROVEMENTS**



MORRIS COUNTY DEPARTMENT OF ENGINEERING

EAST HANOVER AVE. CORRIDOR STUDY

**ALTERNATIVE 3-B
E. HANOVER AVE./W/HANOVER AVE. AND
ROUTE US 202 (SPEEDWELL AVE.)**

SHIFT INTERSECTION IN ALTERNATIVE 3 TO MODIFY R.O.W. TAKINGS



MORRIS PLAINS BORO

MORRIS COUNTY



MORRIS COUNTY DEPARTMENT OF ENGINEERING

EAST HANOVER AVE. CORRIDOR STUDY

ALTERNATIVE 3
E. HANOVER AVE. AND THE AMERICAN RD.
TERMINUS OF THE MULTI-USE PATH WITH
POTENTIAL CONNECTION TO NJ TRANSIT
RAIL STATION

MORRIS TOWNSHIP

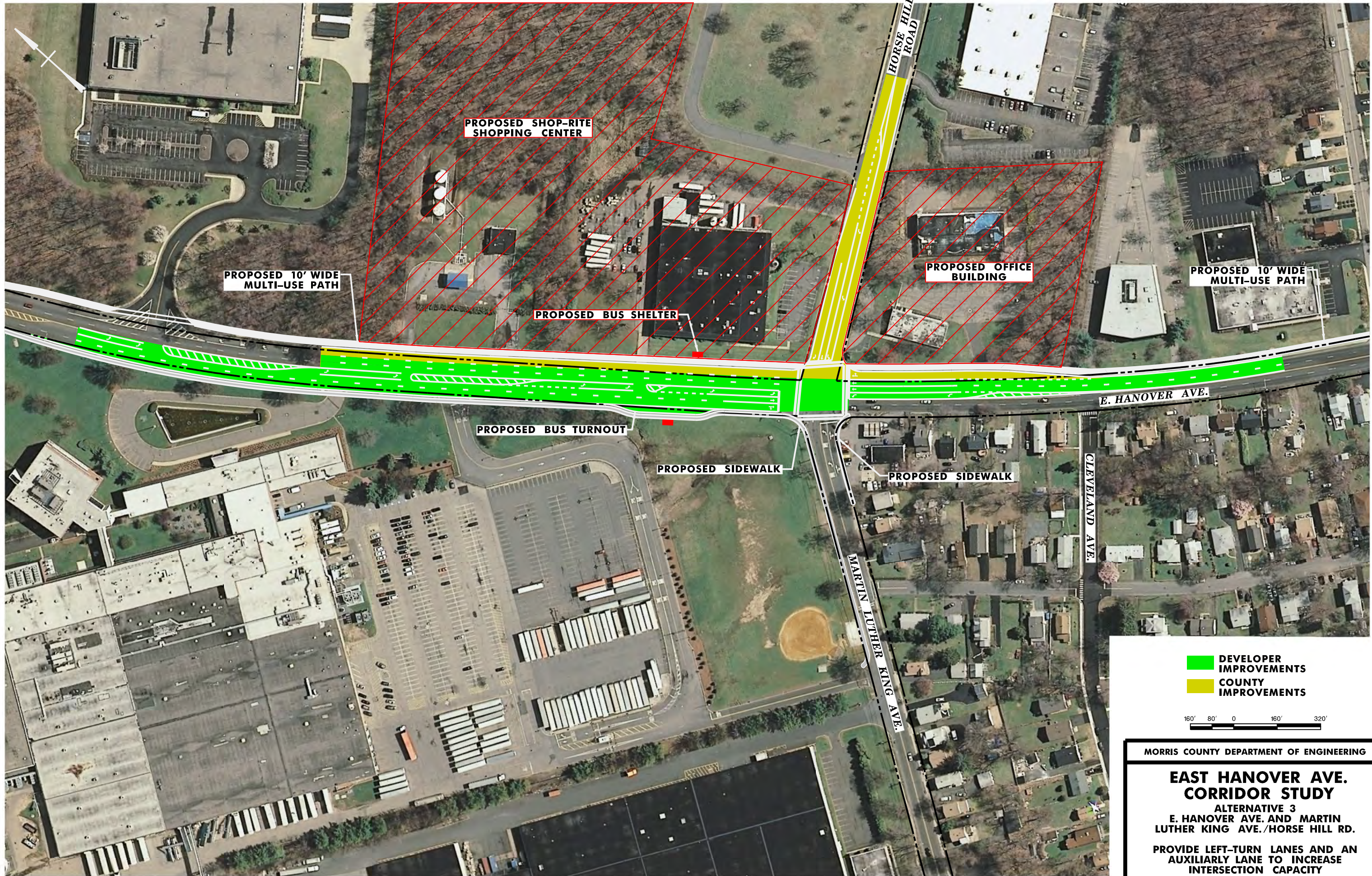
MORRIS COUNTY

HANOVER TOWNSHIP

MORRIS COUNTY

MORRIS TOWNSHIP

MORRIS COUNTY



**DEVELOPER
IMPROVEMENTS**
**COUNTY
IMPROVEMENTS**

160' 80' 0 160' 320'

MORRIS COUNTY DEPARTMENT OF ENGINEERING

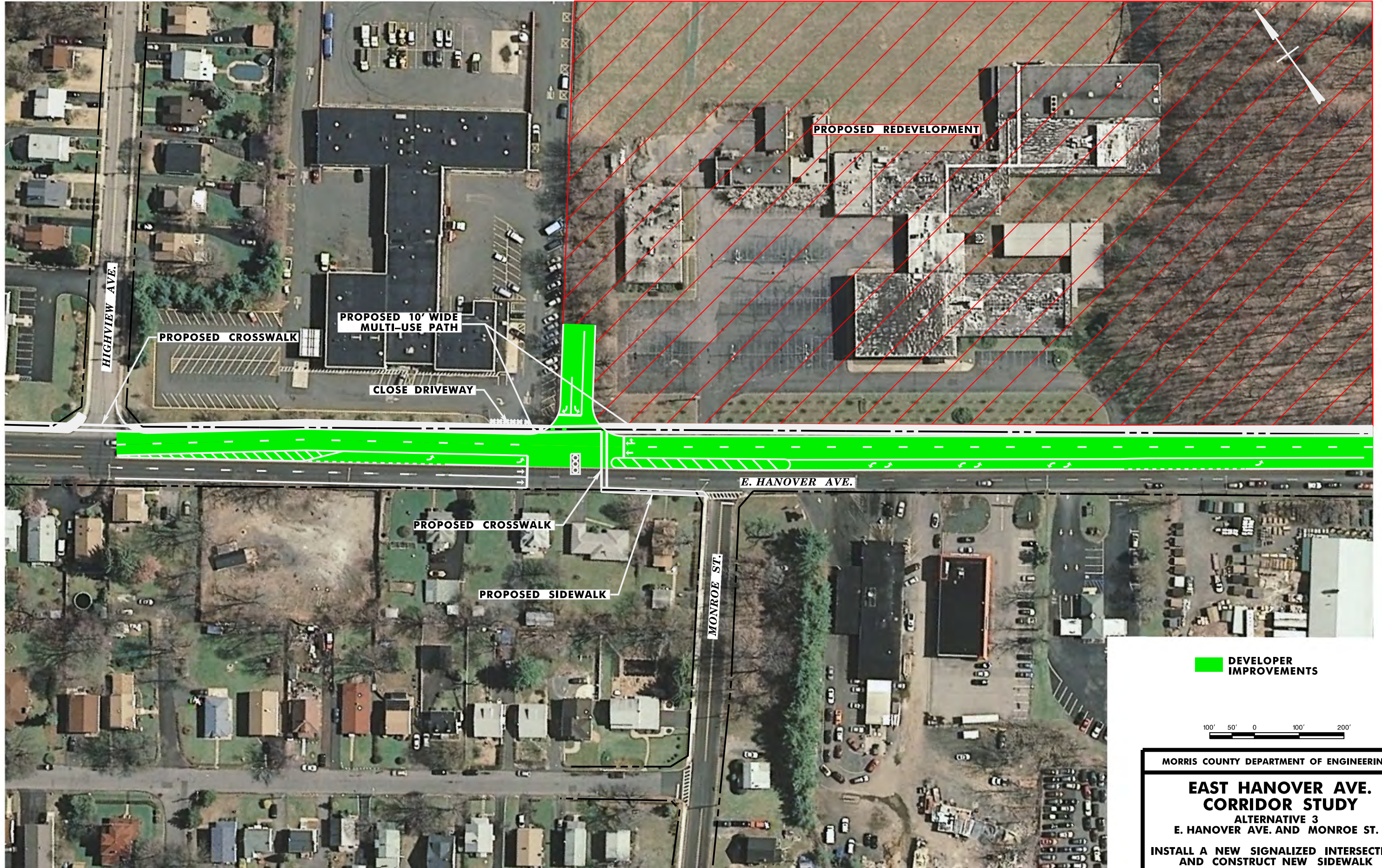
EAST HANOVER AVE. CORRIDOR STUDY

ALTERNATIVE 3
E. HANOVER AVE. AND MARTIN
LUTHER KING AVE./HORSE HILL RD.

PROVIDE LEFT-TURN LANES AND AN
AUXILIARY LANE TO INCREASE
INTERSECTION CAPACITY

HANOVER TOWNSHIP

MORRIS COUNTY



 DEVELOPER IMPROVEMENTS



MORRIS COUNTY DEPARTMENT OF ENGINEERING

EAST HANOVER AVE. CORRIDOR STUDY

ALTERNATIVE 3
E. HANOVER AVE. AND MONROE ST.

INSTALL A NEW SIGNALIZED INTERSECTION
AND CONSTRUCT NEW SIDEWALK

MORRIS TOWNSHIP

MORRIS COUNTY

FILE NAME: U:\19231041 CADD (Hudson)\19231041.dgn
DATE: 03/20/22
TIME: 14:23 PM
USER: hudson

DESIGNED BY: _____
DETAIL CHECKED BY: _____

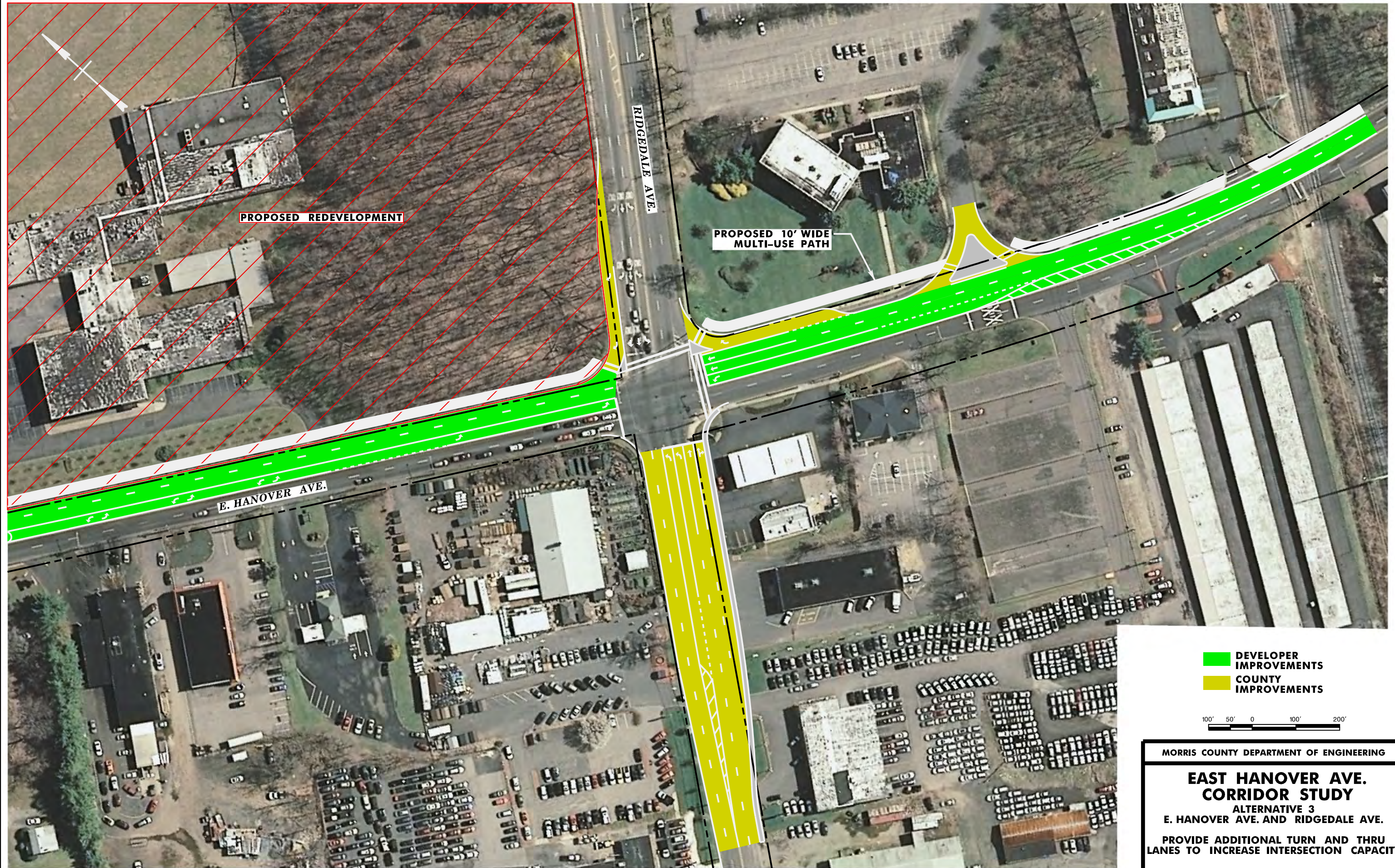
IN CHARGE OF: _____

STANDARD
COUNTY ENGINEERING
1000 N. 10TH AVE., SUITE 200
MORRISVILLE, NC 27560
TEL: 704/841-1111
FAX: 704/841-1112
WWW.MORRISCOUNTYENGINEERING.COM



HANOVER TOWNSHIP

MORRIS COUNTY



- DEVELOPER IMPROVEMENTS
- COUNTY IMPROVEMENTS



MORRIS COUNTY DEPARTMENT OF ENGINEERING

EAST HANOVER AVE. CORRIDOR STUDY

ALTERNATIVE 3

E. HANOVER AVE. AND RIDGEDALE AVE.

PROVIDE ADDITIONAL TURN AND THRU
LANES TO INCREASE INTERSECTION CAPACITY

MORRIS TOWNSHIP

MORRIS COUNTY



 COUNTY IMPROVEMENTS

100' 50' 0 100' 200'

MORRIS COUNTY DEPARTMENT OF ENGINEERING

EAST HANOVER AVE. CORRIDOR STUDY

ALTERNATIVE 3
E. HANOVER AVE. AND
ON RAMP TO ROUTE 24 EB

PROVIDE AN ADDITIONAL RECEIVING LANE
ON NJ 24 ON-RAMP