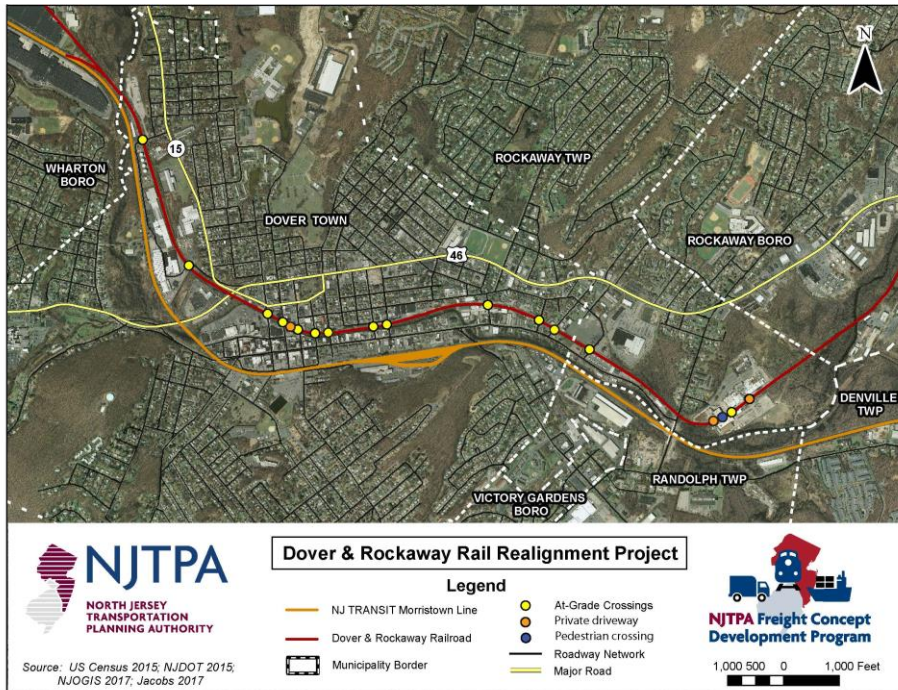


NJTPA Pilot Freight Concept Development Program

Dover & Rockaway Rail Realignment Project



Draft Project Purpose and Need

The purpose of this project is to optimize freight movement and improve safety by reducing conflicts between the Dover & Rockaway Railroad (D&R) freight line and vehicular and pedestrian traffic especially in downtown Dover.

The Project

Develop and assess potential alternatives to relocate the existing junction between the D&R and the NJ TRANSIT Morristown Line to east of Dover. Moving the connection would eliminate the un-gated street crossings in downtown Dover, improving the efficiency and safety of freight rail transport on the D&R.

Background

The D&R is an approximately six-mile-long rail line that runs at grade level through the older neighborhood of mixed residential, commercial and industrial in downtown Dover. The D&R currently connects to the NJ TRANSIT Morristown Line at the D&R Junction west of Dover. The project area is primarily located in the Town of Dover and Rockaway Borough, but includes small areas of Denville Township, Mine Hill Township, Randolph Township, Rockaway Township, Victory Gardens Borough, and Wharton Borough in Morris County.

The D&R has 13 at-grade road crossings in Dover and 5 in Rockaway Township. None of these crossings are controlled by gates, and many are located in close proximity to each other. As a result, trains move very slowly through this area of the D&R so as to avoid vehicular and pedestrian conflicts. This circumstance is highly inefficient and still presents safety risks to drivers and pedestrians traversing the downtown.

Further Information

Jakub Rowinski, Project Manager, NJTPA

Email: jrowinski@njtpa.org

www.doverrailstudy.org

Follow @doverrailstudy on Twitter

Schedule

- This three-year effort began in December 2016
- Final Purpose & Need Statement, November 2018
- Selection of Preliminary Preferred Alternative, June 2019
- Concept Development Report Complete, December 2019