

# Dover & Rockaway Rail Realignment Project

Public  
Information  
Center  
May 28, 2020



Jakub Rowinski, NJTPA Project Manager

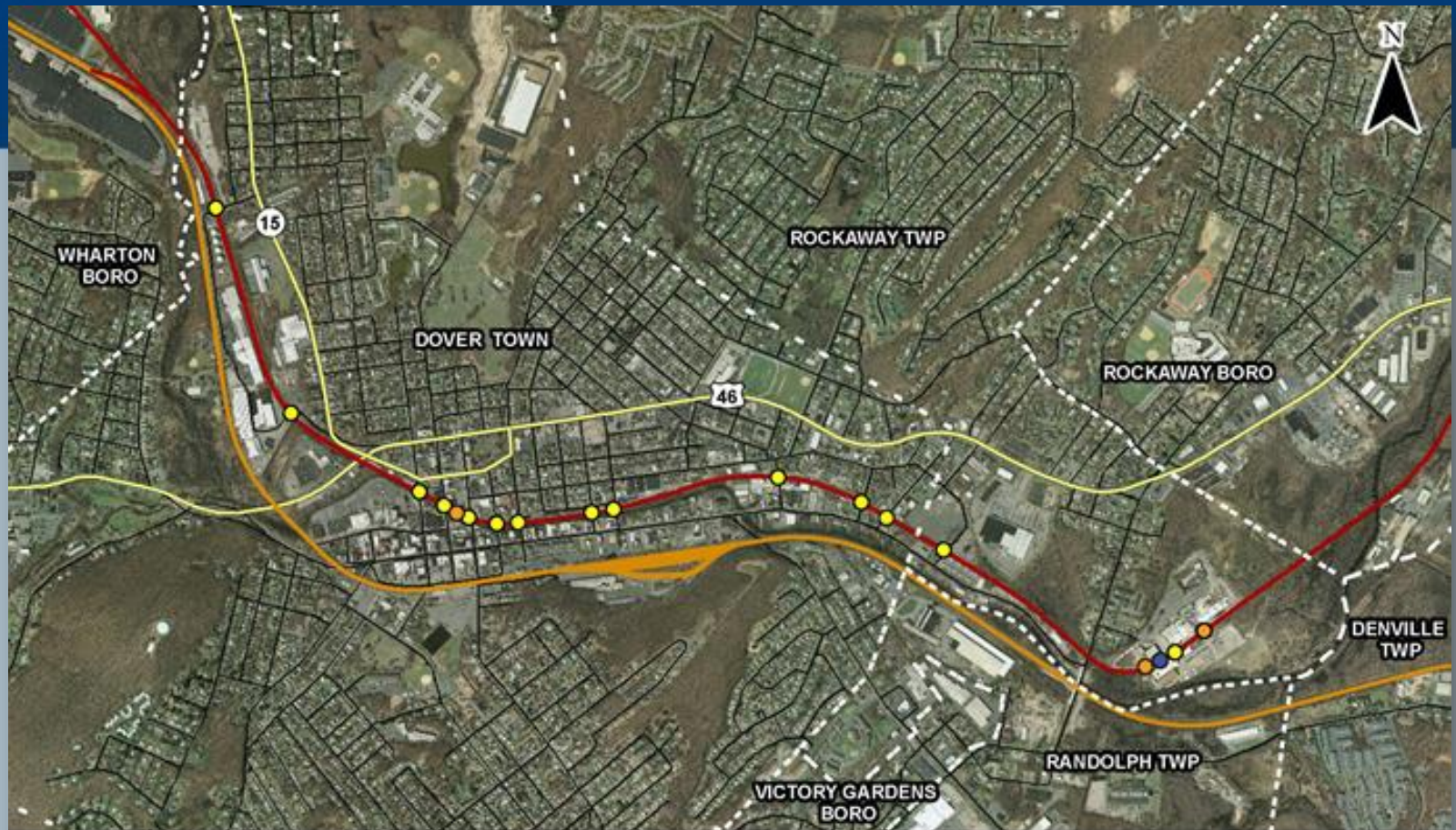
Scott Parker, Jacobs Engineering Project Manager



# Meeting Agenda

- Project Overview
- Data Collection
- Stakeholder Engagement
- Alternatives Scoring and Selection of Preliminary Preferred Alternative (PPA)
- Next Steps

# Project Overview



Source: US Census 2015; NJDOT 2015; NJOGIS 2017; Jacobs 2017

## Dover & Rockaway Rail Realignment Project

### Legend

- NJ TRANSIT Morristown Line
- Dover & Rockaway Railroad
- Municipality Border
- At-Grade Crossings
- Private driveway
- Pedestrian crossing
- Roadway Network
- Major Road



1,000 500 0 1,000 Feet



# Project Overview

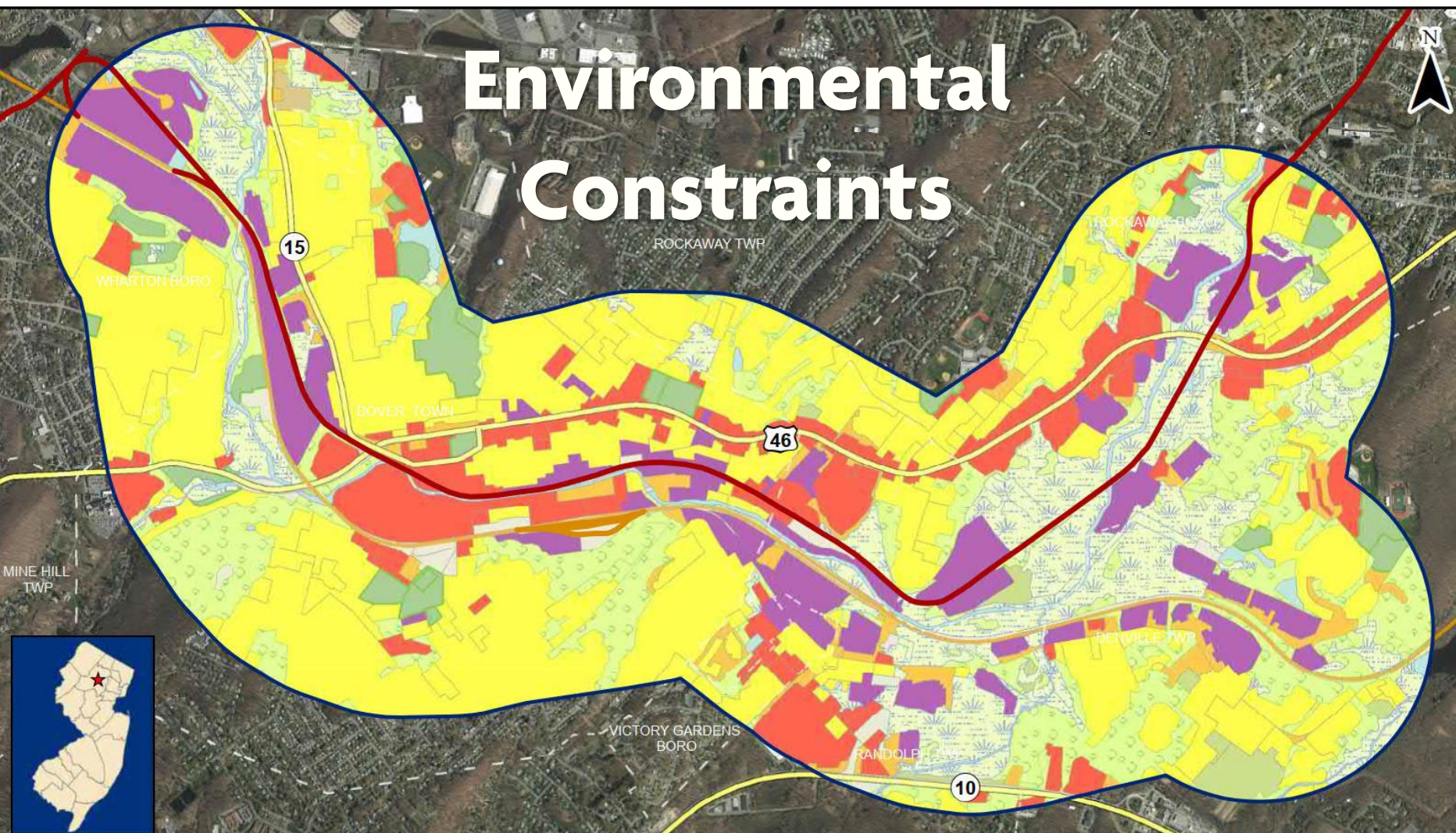
*The purpose of this project is to optimize freight movement and improve safety by reducing conflicts between the Dover & Rockaway Railroad (“D&R”) freight line and vehicular and pedestrian traffic especially in downtown Dover.*

- 12 un-gated at-grade road and 1 un-gated private driveway crossings in the Town of Dover
- 2 un-gated at-grade road, 2 un-gated private driveway and 1 un-gated pedestrian crossings in the Township of Rockaway
- Pedestrian and roadway safety concerns
- Noise and air quality impacts
- Inefficient rail operations

# Key Constraints

- Existing Land Use
- Wetlands
- C-1 Waterways and Stream Corridors
- Flood Hazard Areas
- Threatened and Endangered Species
- Hazardous Materials
- Utilities
- Historic / Cultural Resources

# Environmental Constraints



## Legend

- Project Area
- Municipality Border
- Major Road
- NJ TRANSIT Morristown Line
- Dover & Rockaway Railroad

### Land Use:

- |                           |  |
|---------------------------|--|
| WATER BODIES              | INDUSTRIAL                             |
| RECREATIONAL & OPEN SPACE | MILITARY INSTALLATIONS                 |
| COMMERCIAL/SERVICES       | MIXED URBAN OR BUILT-UP LAND           |
| CROPLAND AND PASTURELAND  | RESIDENTIAL                            |
| WOODED LAND               | TRANSPORTATION/COMMUNICATION/UTILITIES |
| WETLANDS                  |  |

## Land Use in the Dover-Rockaway Project Area

1,500 750 0 1,500 Feet

Source: NJDOT 2015; NJOGIS 2017; Jacobs 2017



# Environmental Constraints



## Legend



Mapped Wetlands



Project Area



Municipality Border



Major Road



NJ TRANSIT Morristown Line



Dover & Rockaway Railroad

**Mapped Wetlands  
in the  
Dover-Rockaway Project Area**

1,500 750 0 1,500 Feet



Source: NJDOT 2015; NJDEP 2017; NJOGIS 2017; Jacobs 2017



# Environmental Constraints



## Legend

- Non- C1 Water
- C1 Waters
- 300' C1 Buffer
- Project Area
- Municipality Border
- Major Road
- NJ TRANSIT Morristown Line
- Dover & Rockaway Railroad

**C1 Waters and Buffers  
in the  
Dover-Rockaway Project Area**

1,500 750 0 1,500 Feet

Source: NJDOT 2015; NJDEP 2017; NJOGIS 2017; Jacobs 2017



# Environmental Constraints



## Legend

### FEMA Flood Zone

Areas Historically Subject to Flooding

500 Year Flood Zone

100 Year Flood Zone

Areas Not Historically Subject to Flooding



Project Area



Municipality Border



Major Road



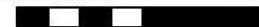
NJ TRANSIT Morristown Line



Dover & Rockaway Railroad

## Flood Hazard Areas in the Dover-Rockaway Project Area

1,500 750 0 1,500 Feet



Source: NJDOT 2015; Morris County 2017; NJOGIS 2017; Jacobs 2017



# Environmental Constraints



## Threatened and Endangered Species in the Dover-Rockaway Project Area



Source: NJDOT 2015; NJDEP 2017  
NJOGIS 2017; Jacobs 2017

### Legend

- Rank 1 - Habitat specific requirements
- Rank 2 - Special Concern
- Rank 3 - State Threatened
- Rank 4 - State Endangered
- Rank 5 - Federal Listed

- Project Area
- Municipality Border
- Major Road
- NJ TRANSIT Morristown Line
- Dover & Rockaway Railroad



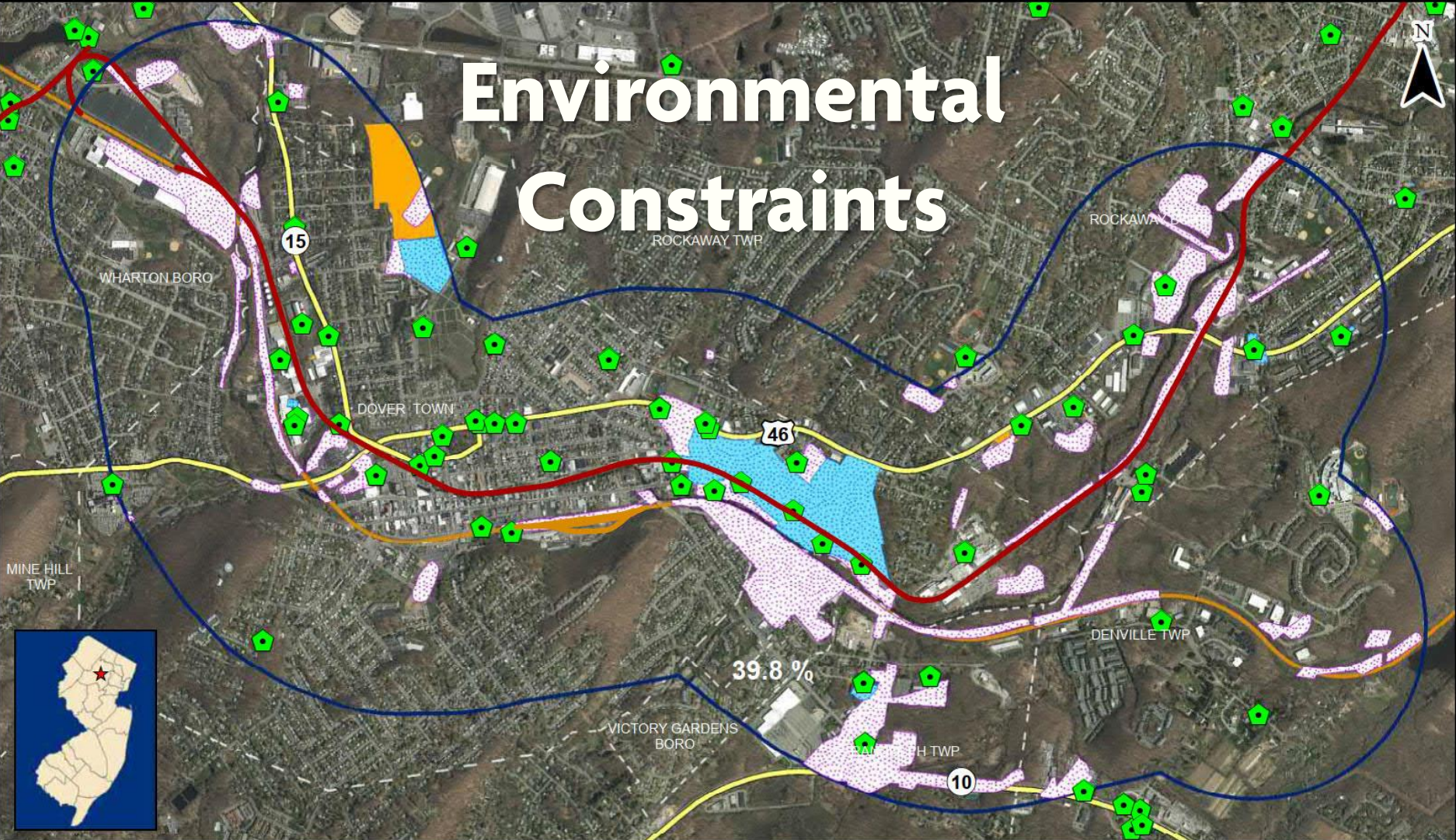
**NJTPA Freight Concept  
Development Program**

1,500 750 0 1,500 Feet





# Environmental Constraints



## Legend

- |  |                          |  |                            |
|--|--------------------------|--|----------------------------|
|  | Known Contaminated Sites |  | Project Area               |
|  | Deed Notice              |  | Municipality Border        |
|  | Groundwater Exception    |  | Major Road                 |
|  | Historic Fill            |  | NJ TRANSIT Morristown Line |
|  |                          |  | Dover & Rockaway Railroad  |

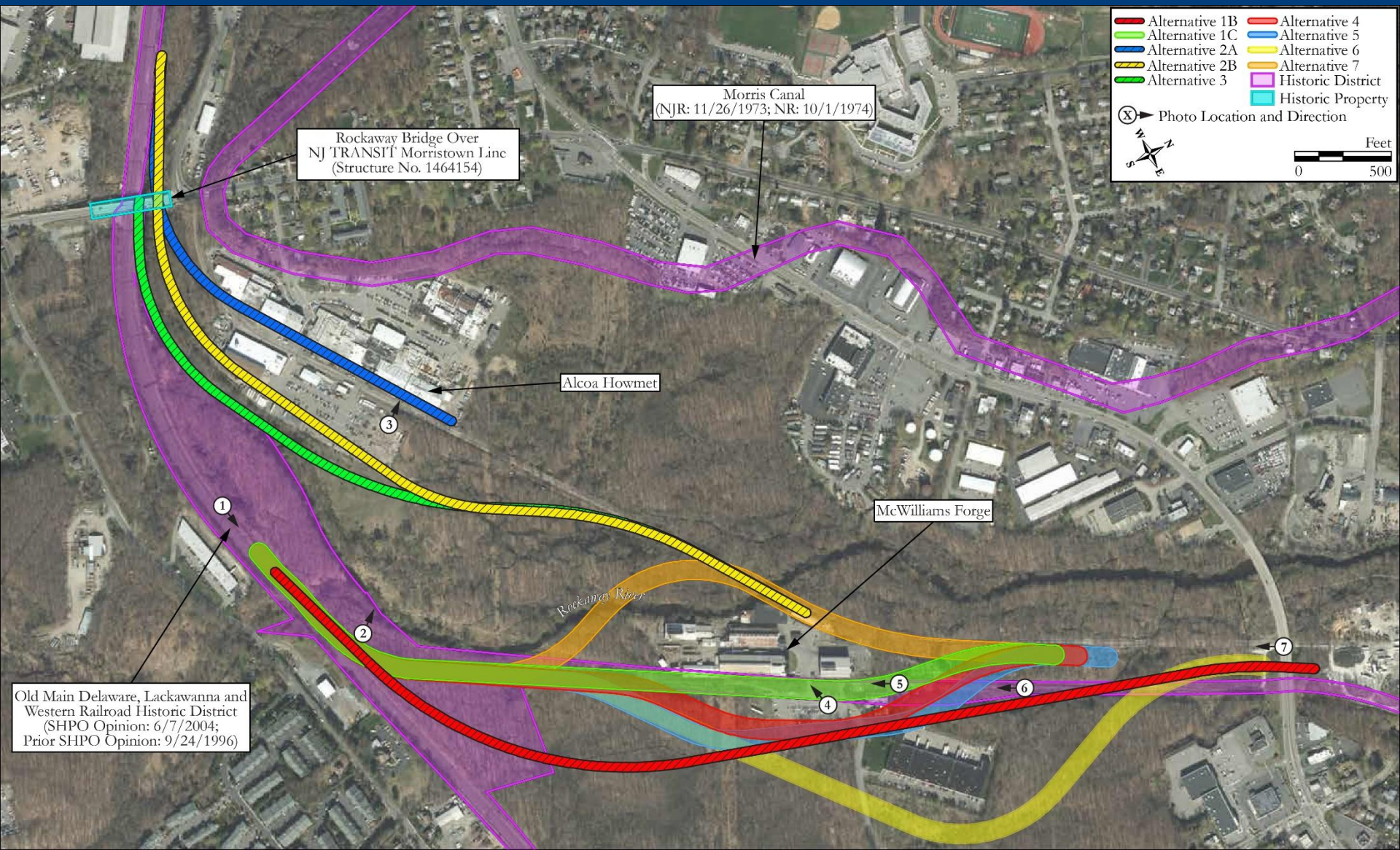
## Known Hazardous Materials Concerns in the Dover-Rockaway Project Area

1,500 750 0 1,500 Feet

Source: NJDOT 2015; NJOGIS 2017; Jacobs 2017

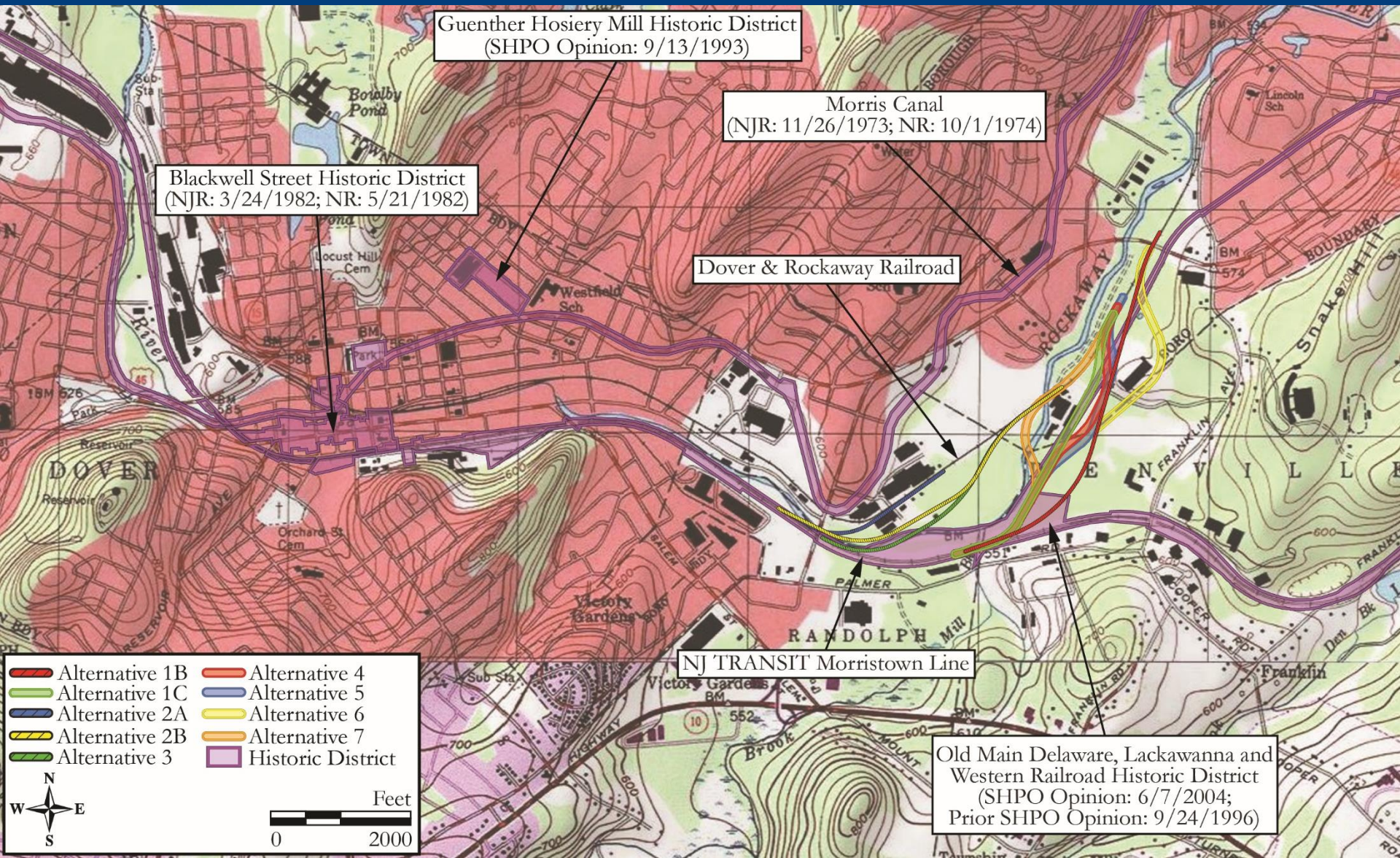


# Historic and Cultural Resources





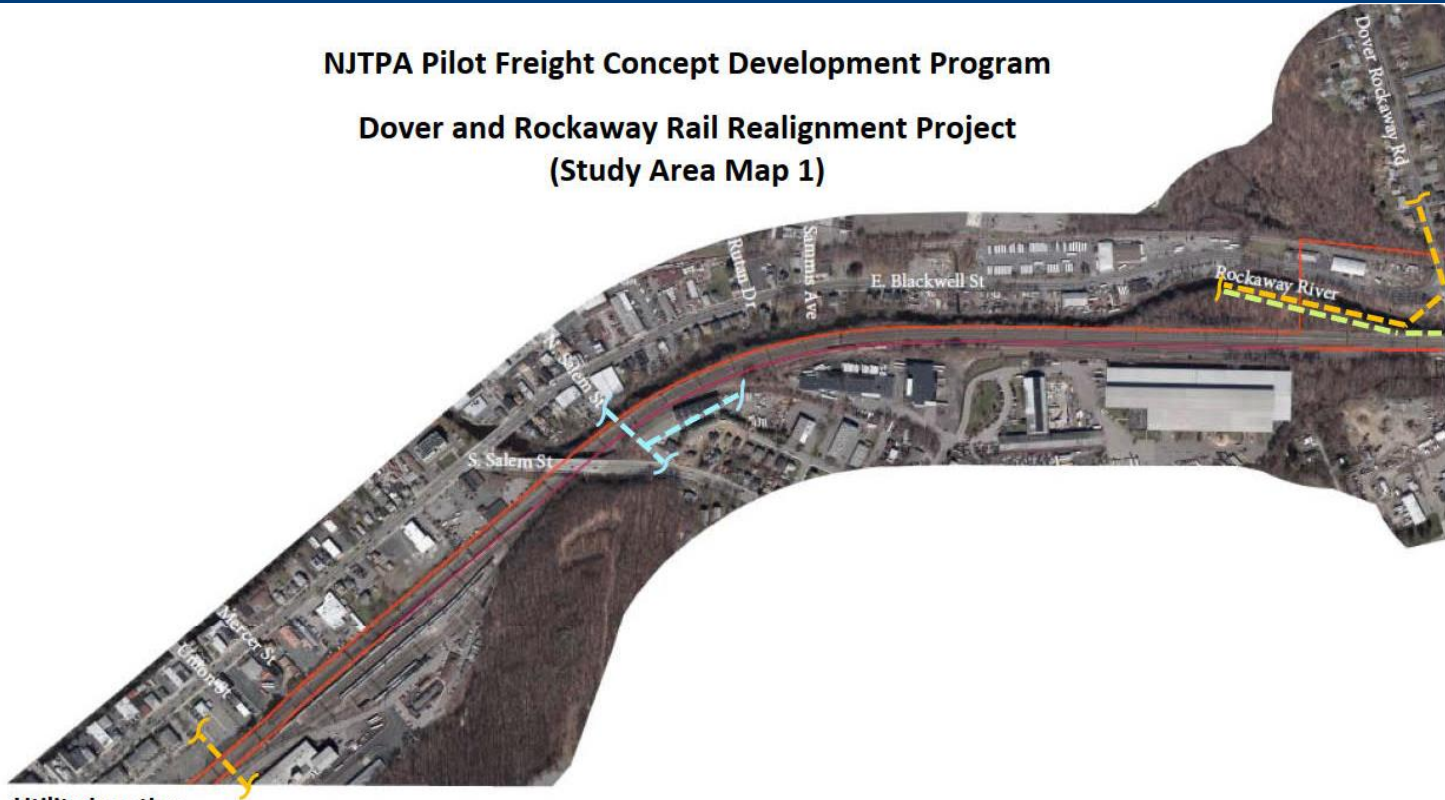
# Historic and Cultural Resources





# Utilities

## NJTPA Pilot Freight Concept Development Program Dover and Rockaway Rail Realignment Project (Study Area Map 1)



### Utility Location

- Gas -12" Steel Transmission Main (NJ Natural Gas)
- Regional Sewer<sup>1</sup> – Interceptor (Rockaway Valley Regional Sewerage Authority)
- **Power** – Only provides information via in-person. (First Energy Corporation)
- Telecommunications – “No facilities near railway”
- Water -10" pipe (Town of Dover Water Commission)

### Project Identification

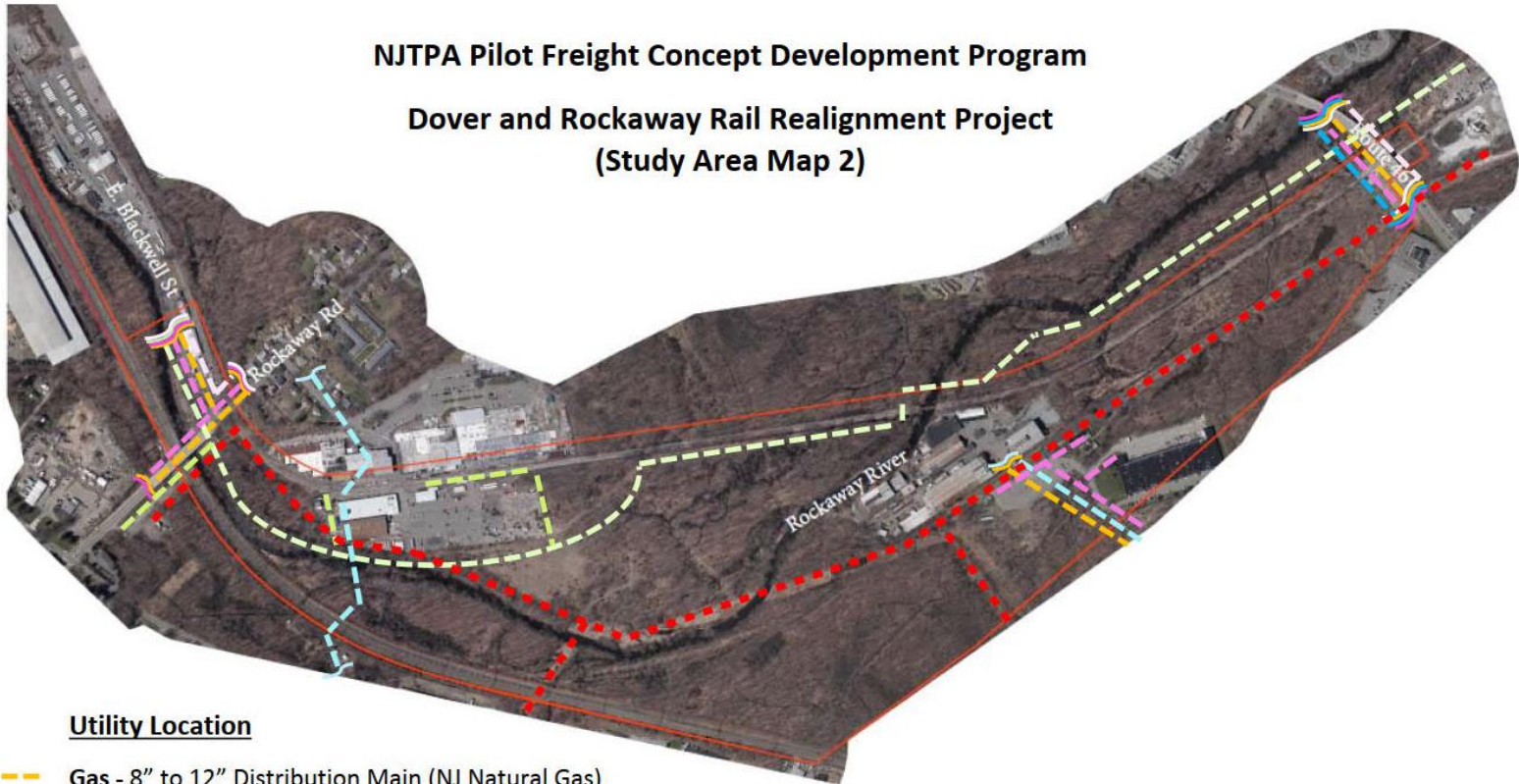
- Base Mapping Boundary



# Utilities

## NJTPA Pilot Freight Concept Development Program

### Dover and Rockaway Rail Realignment Project (Study Area Map 2)



#### Utility Location

- Gas - 8" to 12" Distribution Main (NJ Natural Gas)
- Regional Sewer - Interceptor (Rockaway Valley Regional Sewerage Authority)
- Power Overhead 5Kv to 34.5 Kv (First Energy Corporation)
- Telecommunications - Fiber or 0.25" EHS Support Aerial (Optimum)
- Telecommunications - Conduit and Aerial 1-11/4" ID (Verizon)
- Water - ≤ 12" pipe (Township of Denville Water Utility)
- Water - water main under Route 46 (Rockaway Borough Department of Public Works)

#### Project Identification

- Base Mapping Boundary



# Stakeholder Engagement

- Agencies
  - NJ TRANSIT
  - NJ Department of Transportation
  - New Jersey Historic Preservation Office
- Property Owners / Businesses
  - McWilliams Forge
  - Sandy and Tim McWilliams
  - Donjon Recycling
  - Dover and Rockaway River Railroad
- Local Officials Briefing
- Public Information Center
- Project Website

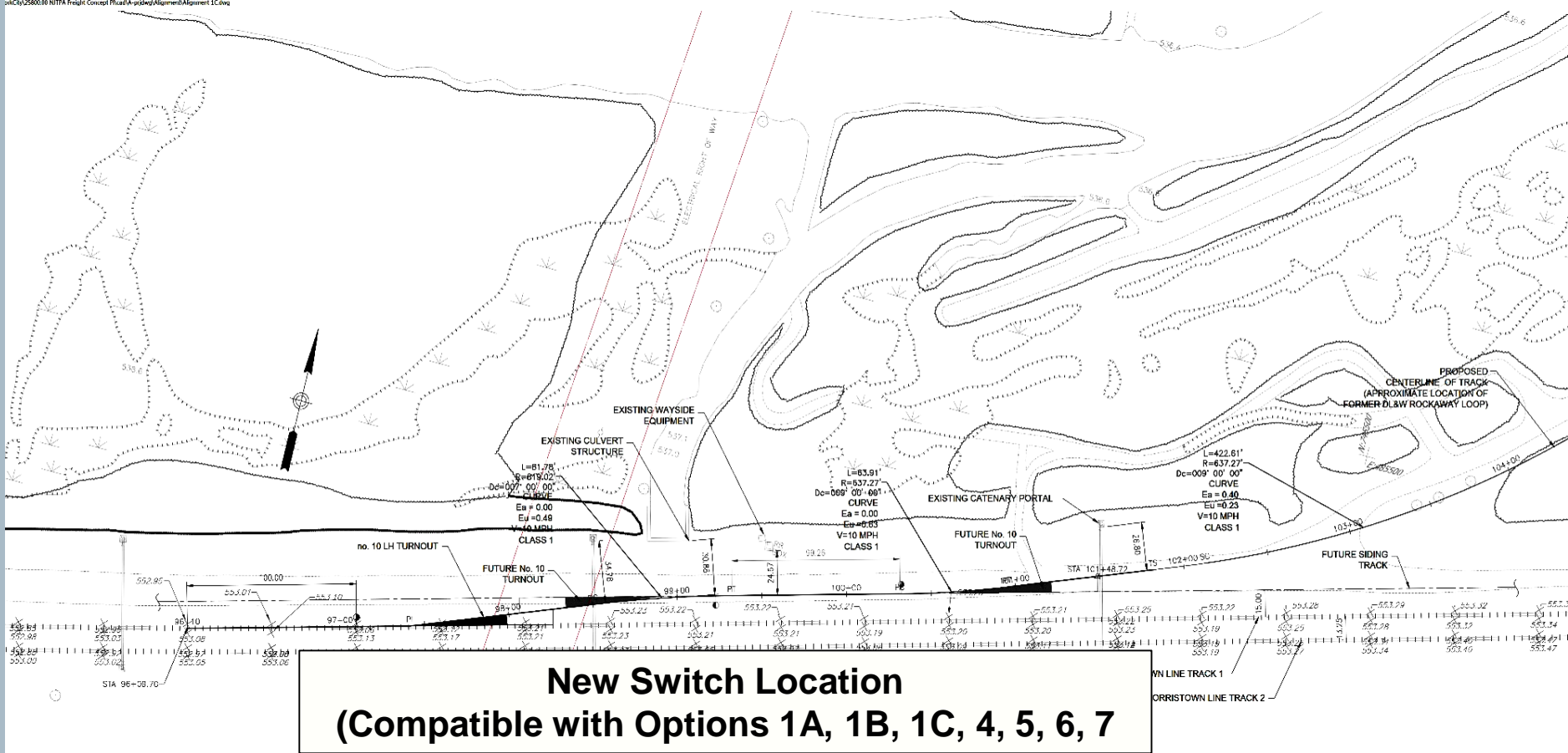


# Alternatives – Alternative Switch Location



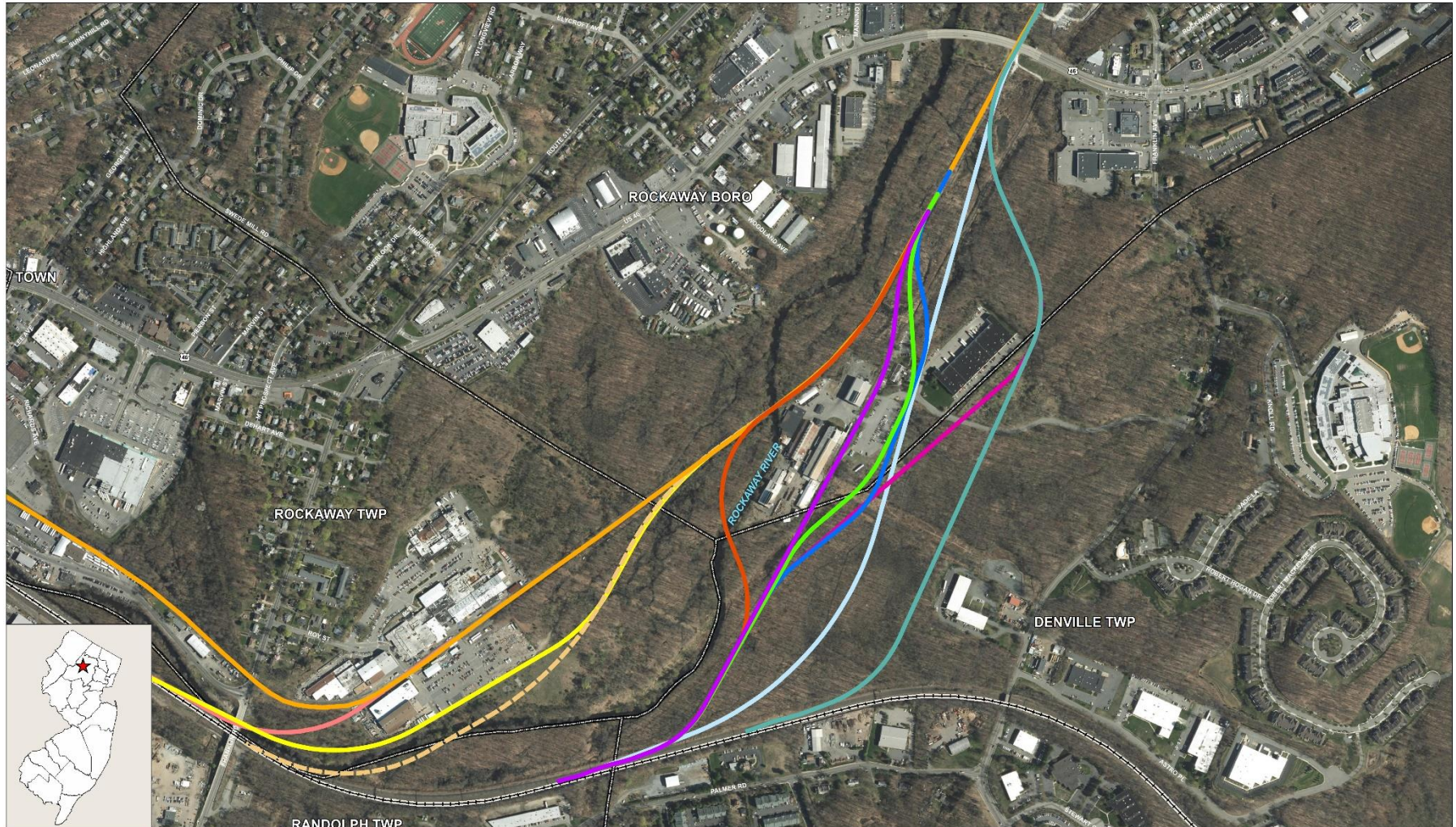


projCity\25800.00 NJTPA Freight Concept Pfcad\A-projdwg\Alignment\Alignment 1C.dwg





# Alternatives Considered



## OVERALL ALIGNMENTS CONSIDERED

### Dover-Rockaway Project Area

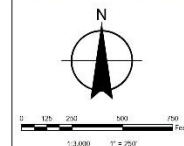
#### LEGEND

- NJ TRANSIT Morristown Line
- Dover & Rockaway Railroad
- Municipal Borders

- Proposed Alignment 1A/1C
- Proposed Alignment 1B
- Proposed Alignment 2A

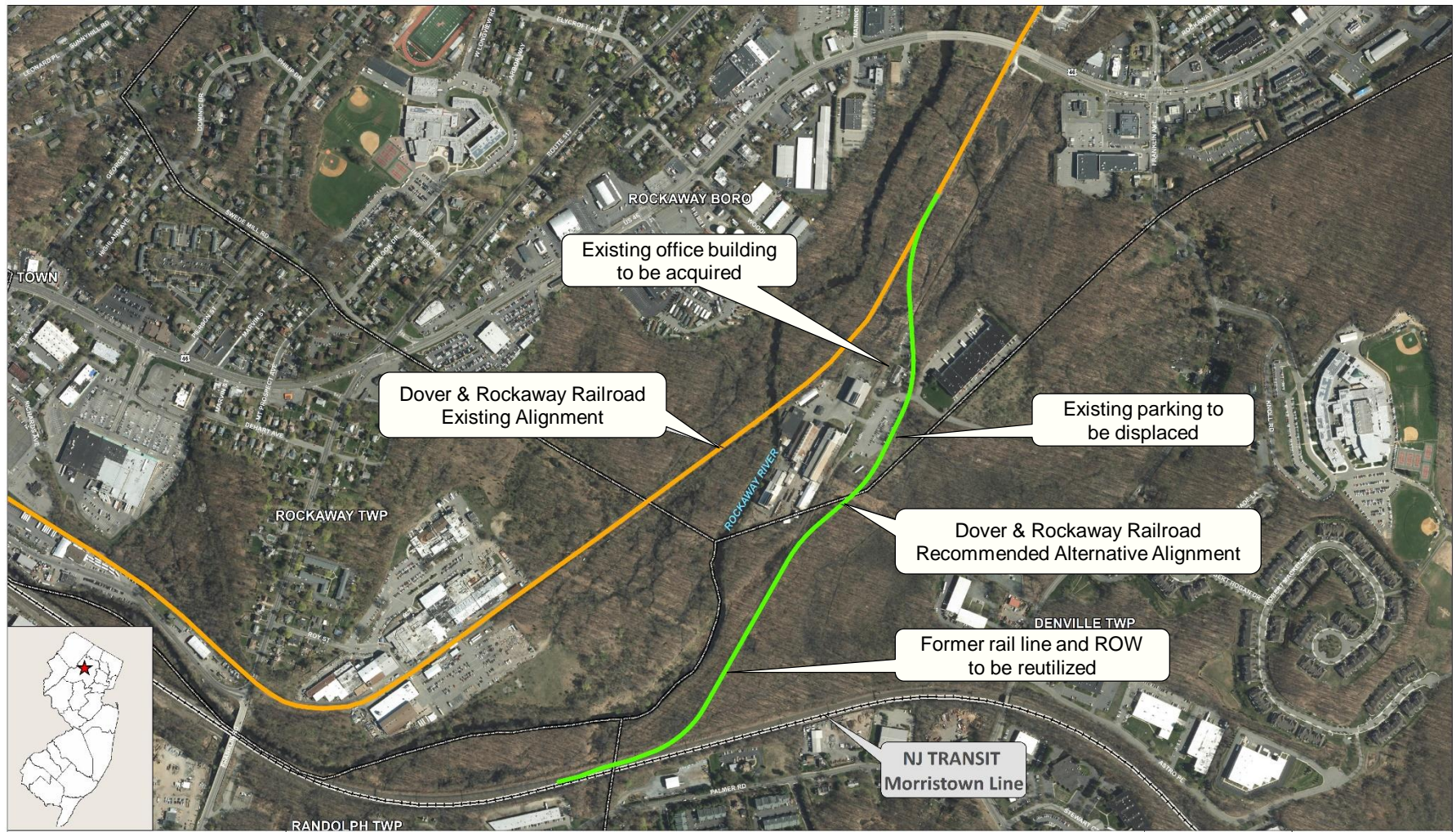
- Proposed Alignment 2B
- Proposed Alignment 3
- Proposed Alignment 4

- Proposed Alignment 5
- Proposed Alignment 6
- Proposed Alignment 7
- Proposed Alignment 8



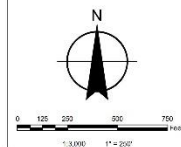


# Preliminary Preferred Alternative



**Dover & Rockaway Railroad Realignment**  
**Existing and Recommended Alternative Alignments**  
**LEGEND**

-  NJ TRANSIT Morristown Line
  Dover & Rockaway Railroad
-  Municipal Borders
  Recommended Alternative Alignment (Proposed Alignment 4)





# Alternatives – Scoring

- Relative Scoring Process
- 14 Criteria

Highly Beneficial	5
Moderately Beneficial	3
Minorly Beneficial	1
Neutral	0
Minorly Detrimental	-1
Moderately Detrimental	-3
Highly Detrimental	-5
Fatally Flawed	-100



# Alternatives – Scoring

Criteria	East Switch			West Switch			Alignment				
	1-A	1-B	1-C	2-A	2-B	3	Thru Bldg & Lot	Between Bldgs	Easterly Swing 1	Westerly Swing	Easterly Swing 2
Freight Rail Operations Impacts / Benefits	3	3	3	3	3	3	3	3	3	3	3
Passenger Rail Operations Impacts / Benefits	-1	-1	-1	-1	-1	-1	-1	-1	-1	-1	-1
Adjacent and Proximate Land Use Impacts / Benefits	-5	-5	-5	-5	-5	-5	-3	-3	0	0	0
Historic and Cultural Resources Impacts / Benefits	-1	-1	-1	-3	-3	-3	-1	-1	-3	-5	-3
Community Profile & Environmental Justice/Title VI Impacts / Benefits	0	0	0	0	0	0	0	0	0	0	0
Wetlands Impacts / Benefits	-3	-3	-1	-1	-1	-5	-1	-3	-5	-5	-5
Floodplains & Aquifers Impacts / Benefits	-1	-1	-1	-100	-100	-100	-1	-1	-1	-5	-1
Threatened & Endangered Species Impacts / Benefits	-1	-1	-1	-1	-1	-3	-1	-3	-5	-5	-5
Stormwater and Drainage Impacts / Benefits	-1	-1	-1	-3	-3	-5	-1	-1	0	0	0
Hazardous Materials Impacts / Benefits	-1	-1	-1	-1	-1	-1	-1	-1	-1	-1	-1
Air Quality & Noise Impacts / Benefits	3	3	3	3	3	3	3	3	3	3	3
Community Impacts / Benefits	5	5	5	5	5	5	5	5	5	5	5
Safety Impacts / Benefits	3	3	3	3	5	5	3	3	3	5	3
Utility Impacts / Relocation Requirements	-1	-1	-1	-1	-3	-1	-1	-1	-1	-1	-1
Summary Score	-1	-1	1	-102	-102	-108	3	-1	-3	-7	-3



# Next Steps

- Complete Value Engineering (VE) Study
- Draft Concept Development Report
- Final Recommendation of Preferred Alternative
- Interagency Review Meeting
- Finalize Concept Development Report



# Thank You/Questions?

*Defining the Vision. Shaping the Future.*



Jakub Rowinski  
jrowinski@njtpa.org  
(973) 639-8443



Find us on  
**Facebook!**

follow us on

**twitter** 



Find Us On  
**Instagram**

You  
Tube

**SUBSCRIBE**  
TO OUR CHANNEL