

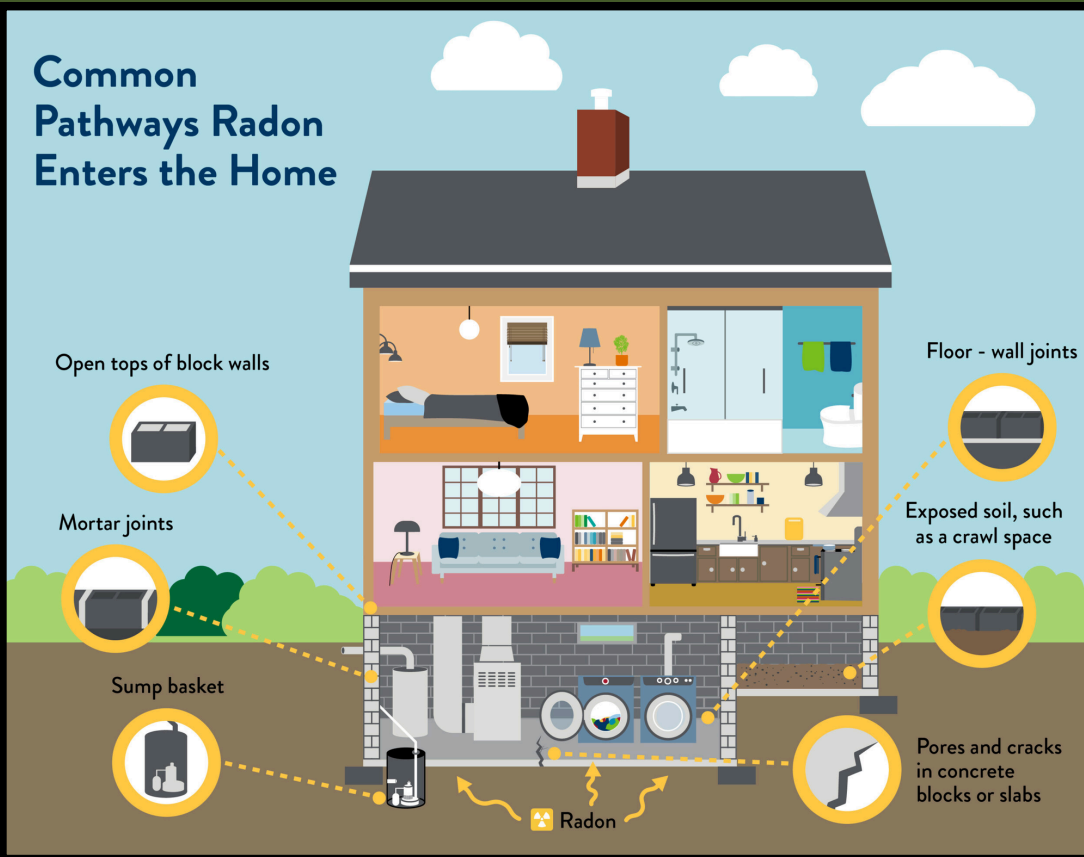
RADON ACTION STARTS AT HOME



WHAT IS RADON AND WHY IS IT IMPORTANT?

RADON IS A NATURALLY OCCURRING RADIOACTIVE GAS THAT YOU CAN'T SEE, SMELL, OR TASTE. IT FORMS FROM THE BREAKDOWN OF URANIUM IN SOIL AND ROCK AND CAN ENTER HOMES THROUGH CRACKS IN FOUNDATIONS, WALLS, AND FLOORS. ANY HOME WHETHER NEW OR OLD CAN HAVE ELEVATED RADON LEVELS. RADON IS THE SECOND LEADING CAUSE OF LUNG CANCER IN THE UNITED STATES, AND LONG-TERM EXPOSURE TO HIGH RADON LEVELS INCREASES HEALTH RISKS FOR EVERYONE IN THE HOME, INCLUDING CHILDREN – ESPECIALLY WHEN RADON GOES UNDETECTED OVER TIME.

Common Pathways Radon Enters the Home



How Does Radon Get Into Homes?

Radon can seep into indoor air through:

- Cracks in floors and walls
- Gaps around pipes and drains
- Sump pumps and crawl spaces
- Basements and slab foundations

The Only Way to Know is to Test

- Testing is easy, affordable, and reliable.
- Short-term tests take 2-7 days
- Long-term tests measure exposure over time
- Home test kits are widely available
- If high levels are found, proven mitigation methods can significantly reduce radon levels.

The New Jersey Department of Environmental Protection (DEP) Radon Program has information about radon testing, mitigation, and certified radon professionals, and may help you locate kits or testing services.

For testing information or radon resources, visit:

www.nj.gov/dep/rpp/radon/?utm_source=cm



County of Morris
Department of Law & Public Safety
Division of Public Health
P.O. Box 900
Morristown, NJ 07963-0900
(973) 631-5184



Public Health
Prevent. Promote. Protect.