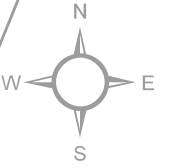
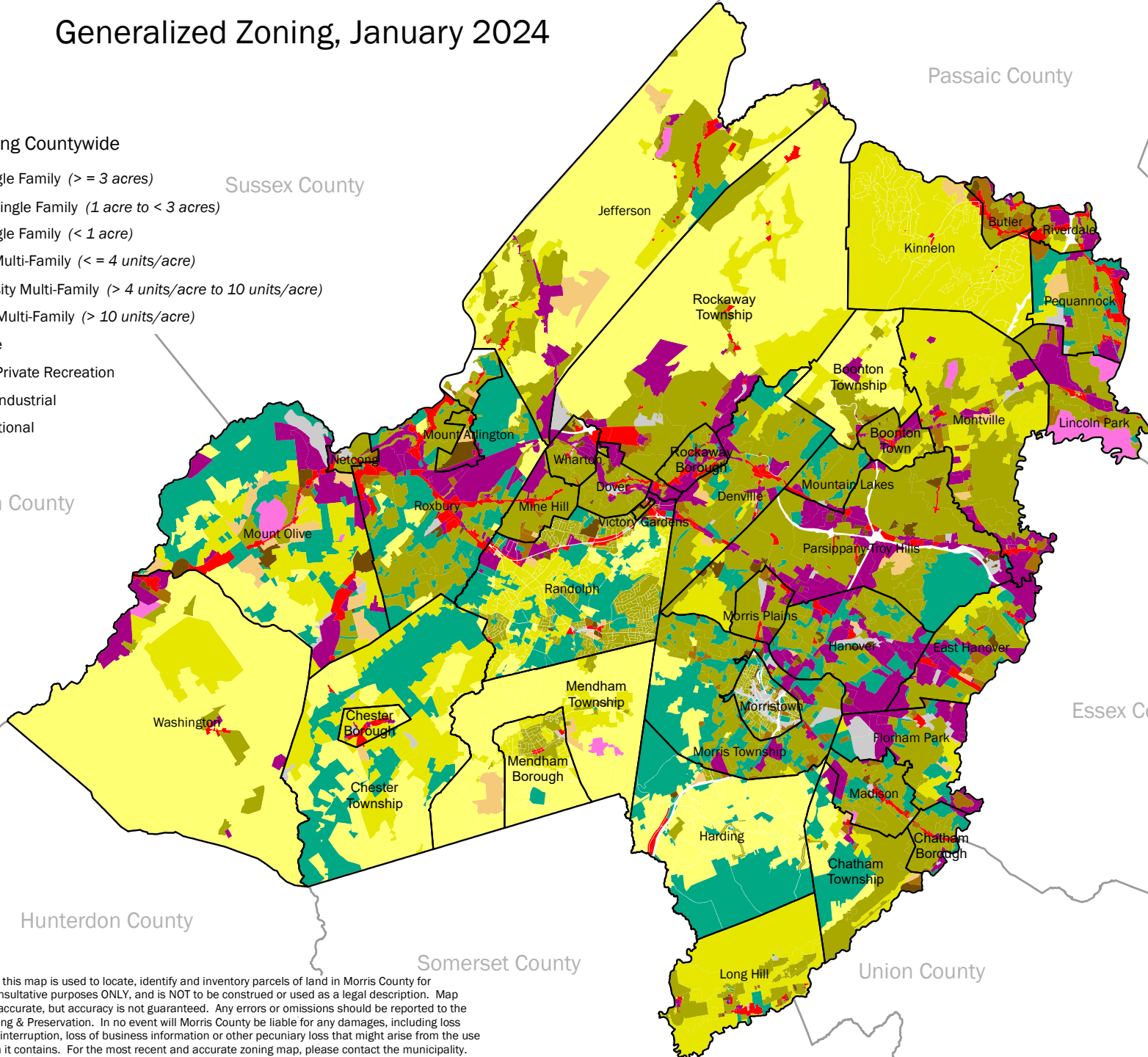


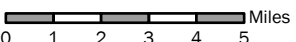
# Generalized Zoning, January 2024

## Categorized Zoning Countywide

- Large Lot Single Family ( $\geq 3$  acres)
- Medium Lot Single Family (1 acre to  $< 3$  acres)
- Small Lot Single Family ( $< 1$  acre)
- Low Density Multi-Family ( $\leq 4$  units/acre)
- Medium Density Multi-Family ( $> 4$  units/acre to 10 units/acre)
- High Density Multi-Family ( $> 10$  units/acre)
- Retail/Service
- Commercial/Private Recreation
- Commercial/Industrial
- Public/Institutional
- Mixed Use



The information contained on this map is used to locate, identify and inventory parcels of land in Morris County for deliberative, advisory, and consultative purposes ONLY, and is NOT to be construed or used as a legal description. Map information is believed to be accurate, but accuracy is not guaranteed. Any errors or omissions should be reported to the Morris County Office of Planning & Preservation. In no event will Morris County be liable for any damages, including loss of data, lost profits, business interruption, loss of business information or other pecuniary loss that might arise from the use of this map or the information it contains. For the most recent and accurate zoning map, please contact the municipality.



Prepared by: Morris County Office of Planning and Preservation  
Map Revised: January 2024