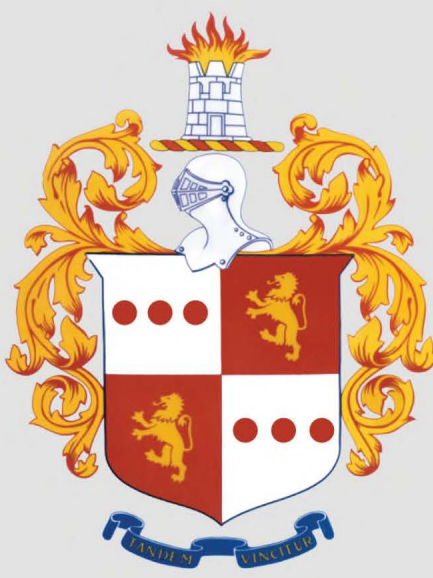




Official County Map

County of Morris

New Jersey



County Owned Lands

- Administration
- Housing Authority
- Municipal Utilities Authority
- Park Commission

Rail Lines

- County Owned Freight Railroads
- Non-County Owned Freight Railroads
- NJ Transit Railroads

Roadways

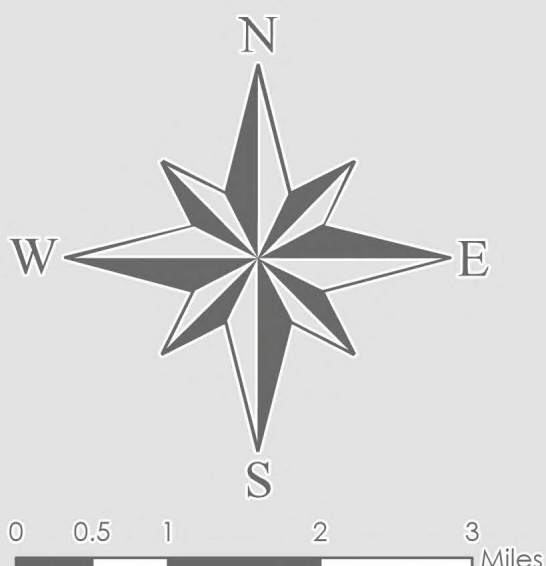
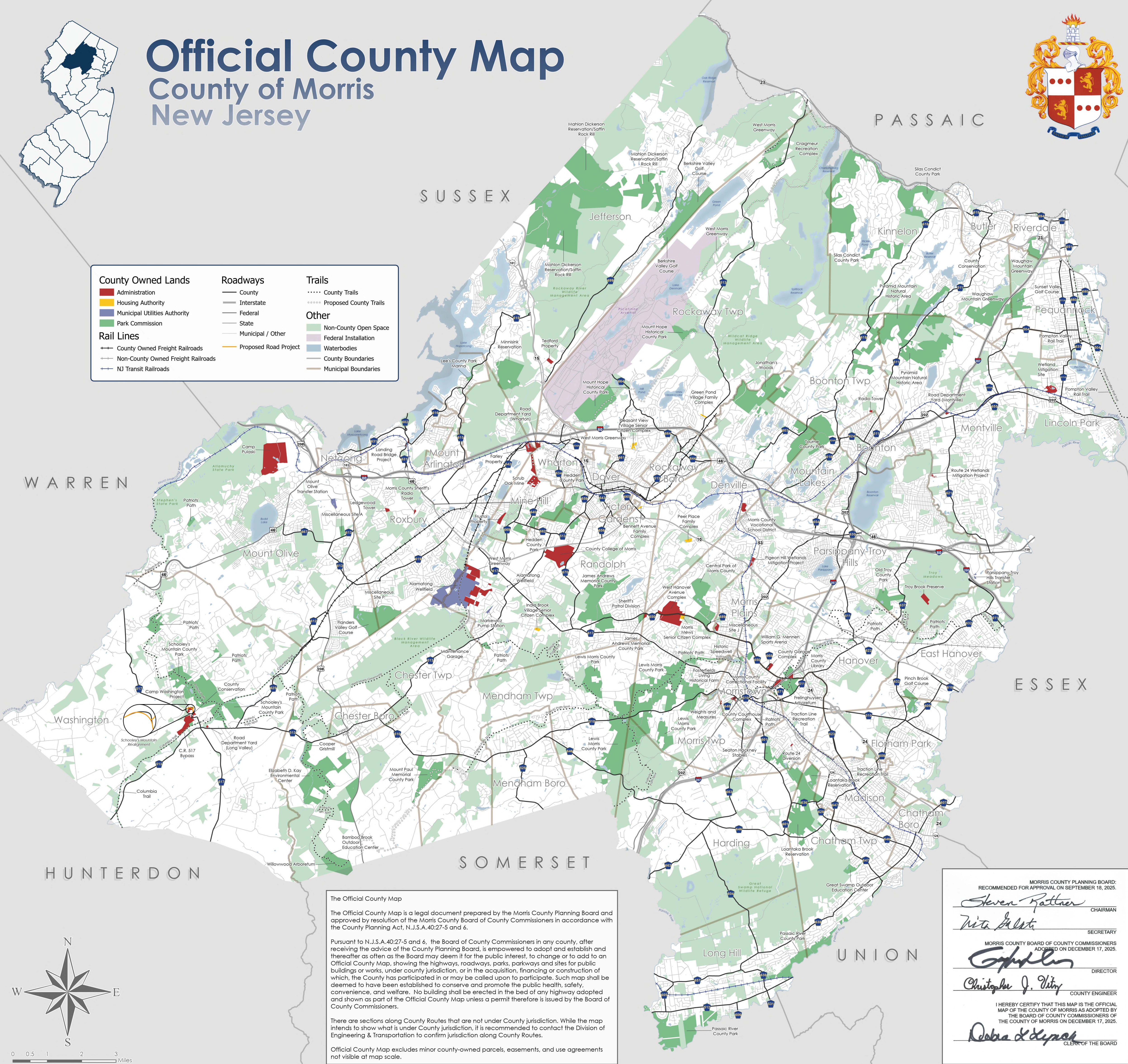
- County
- Interstate
- Federal
- State
- Municipal / Other
- Proposed Road Project

Trails

- County Trails
- Proposed County Trails

Other

- Non-County Open Space
- Federal Installation
- Waterbodies
- County Boundaries
- Municipal Boundaries



The Official County Map

The Official County Map is a legal document prepared by the Morris County Planning Board and approved by resolution of the Morris County Board of County Commissioners in accordance with the County Planning Act, N.J.S.A.40:27-5 and 6.

Pursuant to N.J.S.A.40:27-5 and 6, the Board of County Commissioners in any county, after receiving the advice of the County Planning Board, is empowered to adopt and establish and thereafter as often as the Board may deem it for the public interest, to change or to add to an Official County Map, showing the highways, roadways, parks, parkways and sites for public buildings or works, under county jurisdiction, or in the acquisition, financing or construction of which, the County has participated in or may be called upon to participate. Such map shall be deemed to have been established to conserve and promote the public health, safety, convenience, and welfare. No building shall be erected in the bed of any highway adopted and shown as part of the Official County Map unless a permit therefore is issued by the Board of County Commissioners.

There are sections along County Routes that are not under County jurisdiction. While the map intends to show what is under County jurisdiction, it is recommended to contact the Division of Engineering & Transportation to confirm jurisdiction along County Routes.

Official County Map excludes minor county-owned parcels, easements, and use agreements not visible at map scale.

MORRIS COUNTY PLANNING BOARD:
RECOMMENDED FOR APPROVAL ON SEPTEMBER 18, 2025.

Steven Rattner CHAIRMAN

Nita Balala SECRETARY

MORRIS COUNTY BOARD OF COUNTY COMMISSIONERS
ADOPTED ON DECEMBER 17, 2025.

Christopher J. Vity DIRECTOR

Debra L. DeMarco COUNTY ENGINEER

I HEREBY CERTIFY THAT THIS MAP IS THE OFFICIAL
MAP OF THE COUNTY OF MORRIS AS ADOPTED BY
THE BOARD OF COUNTY COMMISSIONERS OF
THE COUNTY OF MORRIS ON DECEMBER 17, 2025.

Debra L. DeMarco CLERK OF THE BOARD